



Shoemaker's

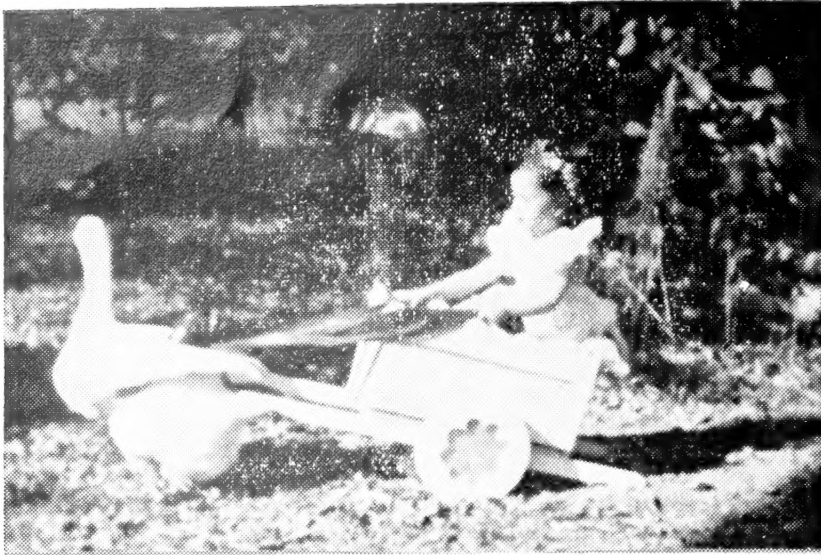
**GARDEN
BOOK**

8134 W. 78th St.

H. E. 0968

Overland Park, Kansas

1954



OZZIE takes our granddaughter Jeanette, for a ride.

To our numerous clients and friends

Once again it gives us great pleasure to introduce our Garden Book for the season of 1954 and to thank the new and old customers who have given us their support.

We appreciate the many kind letters praising the plants received and the results obtained from them and in conclusion we hope to hold your continued support and kind recommendations and as usual will strive to please you in service and good stock

Our GIFT CERTIFICATES are still available for that special occasion.

Yours Faithfully,
Harry and Ophelia Shoemaker

Replacements will be made at our discretion, but, transportation charges on any replacements must be defrayed by the recipient.

Send living gifts that will be cherished for many years. For Christmas, Birthdays, Mother's Day, Easter, Anniversaries, for any occasion.

Each year more and more people wish to send their friends and loved ones Living Gifts. It is very easy to do. We have two plans. We guarantee satisfaction to you and to those receiving the gifts. A card for the occasion will also be sent.

NO. 1 You select from our catalog whatever you wish us to send. Give us the name and complete address to whom you want it shipped. We will send this party a suitable Gift Certificate giving your name as donor and listing the stock (without prices) that will be shipped at the proper planting time.

NO. 2 If you prefer to have them make their own selections, then you simply send us the name and complete address and enclose check or money order for the amount you wish to give. We will send this party a suitable Gift Certificate good for this amount, giving your name as donor. We will also send our catalog stating that they are to select from it whatever they wish for amount of the Gift Certificate. This stock will be shipped at the proper planting time.

Year after year, these Gifts will be a reminder of your thoughtfulness.

NEWEST VARIETIES OF ENGLISH CHRYSANTHEMUMS

1954

All the mums listed below were imported from a prominent nursery in England. This nursery specializes in raising mums for the Florist's trade and his standards are so high a plant must produce from ten to twelve ideal blooms of the highest quality, or be discarded. The pictures in this catalogue are actual pictures taken of his stock. He has been very considerate in releasing this stock for the American Public and we sincerely hope that all our customers are as successful raising these lovely mums as the nurseryman who released them to us.

\$1.25 Each or Three of any one variety for price of Two.

ATHOL—A large purple reflex with a slight silvery reverse. Sept.

BALCOMBE YELLOW—This is considered one of the best early yellows. Large incurving flowers that stand the weather well. Sept.

BRIGHTON YELLOW—For those who want a large, reflex early yellow with wiry stems and small foliage. An ideal variety for the open or under glass. Early Sept.

DELIGHTFUL—A large, semi-incurving, primrose yellow that is very early. Late Aug. or Early Sept.

DOROTHY BECKLEY—A strong growing, very brilliant red. Large reflexed flowers in Sept.

GAUMONT—Very large, pure white, semi-incurving flowers in Sept. A vigorous grower.

JOHN WOOLMAN—If you want an outstanding, perfectly incurved pink that will stand up under most trying conditions. This is it. Sept.

OLDLAND SCEPTRE — Large golden yellow, incurved flowers on good strong stems. Has proved very popular in England. Late Aug., Early Sept.

PURPLE RAY—The best purple we grow. A purple reflex with very slight silvery reverse. Sept.

RED FLORENCE HARWOOD—A beautiful crimson-red sport of FLORENCE

HARWOOD. Those who have heretofore grown the mother plant will know just what it is like. Late Aug., Early Sept.

SWEET GRACE—At last we have here a very large cream incurve that takes the weather very well. Sept.

THOMAS JOHNSON—One of the largest reflexed flowers of deep-rose pink grown in England to date. Sept.

WHITE HOPE VALLEY—A pure white sport from the popular HOPE VALLEY. A very good, early white for your garden. Late Aug.-Early Sept.

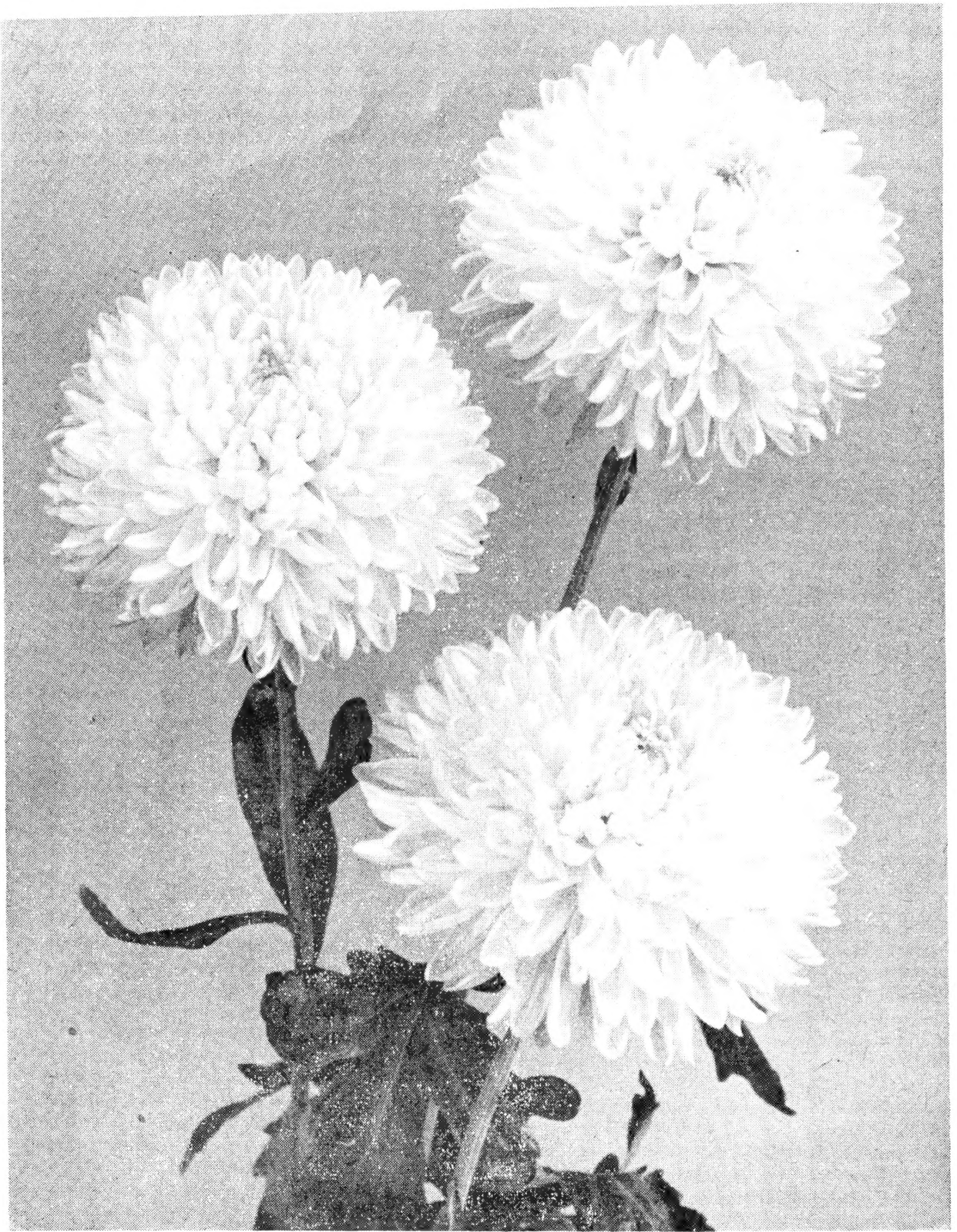
ALL NEW ENGLISH SPECIAL

The following English Collection are 1954 Imports. Catalogue Value—\$12.50
All ten for \$8.50 Postpaid.

ATHOL
BALCOMBE YELLOW
DELIGHTFUL
GAUMONT
JOHN WOOLMAN

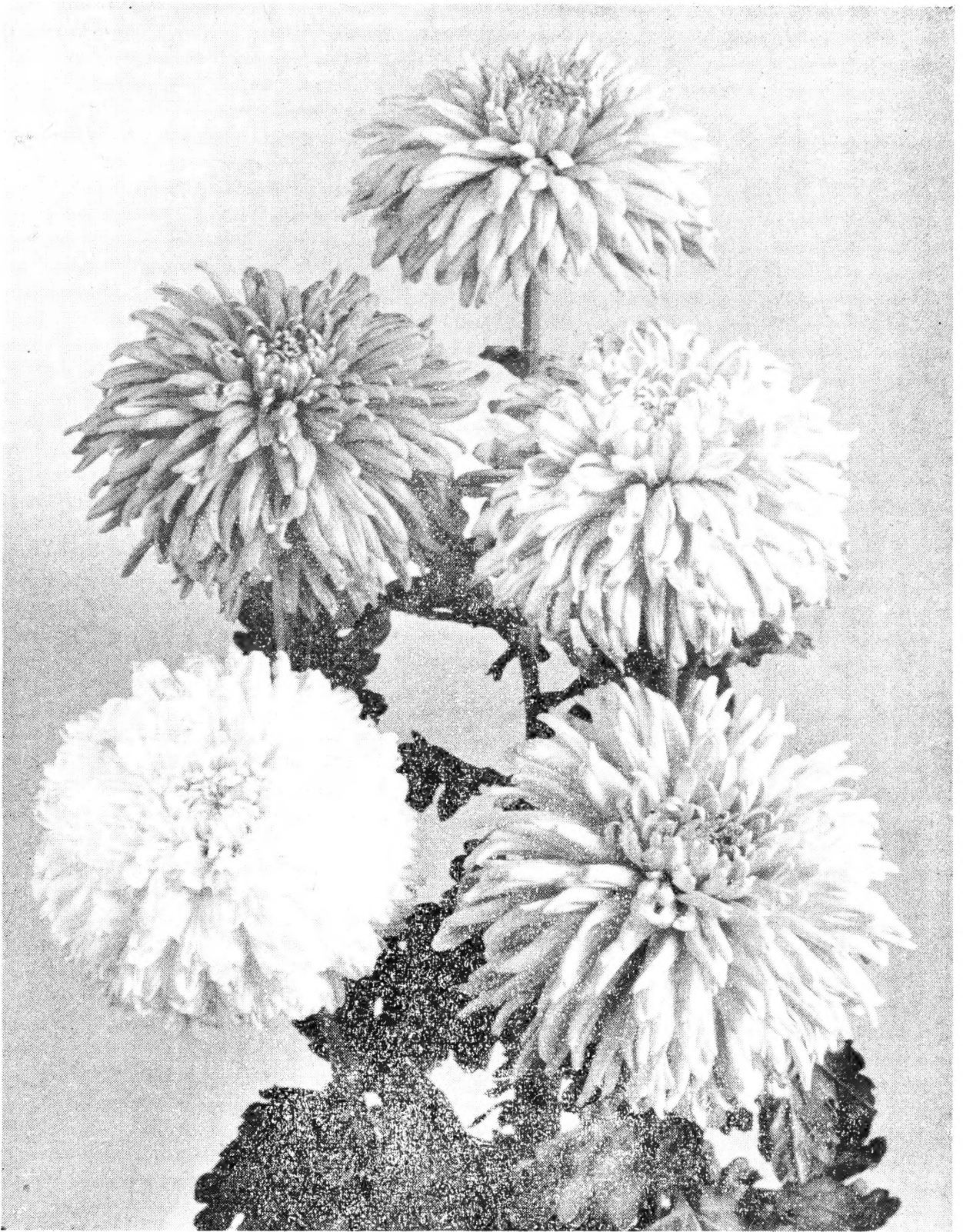
OLDLAND SCEPTRE
RED FLORENCE HARWOOD
SWEET GRACE
THOMAS JOHNSON
WHITE HOPE VALLEY

REMEMBER—Our stock is NOT stolons but tip cuttings from healthy, state inspected stock.



BRIGHTON YELLOW

Courtesy of Colham Green, Ltd.

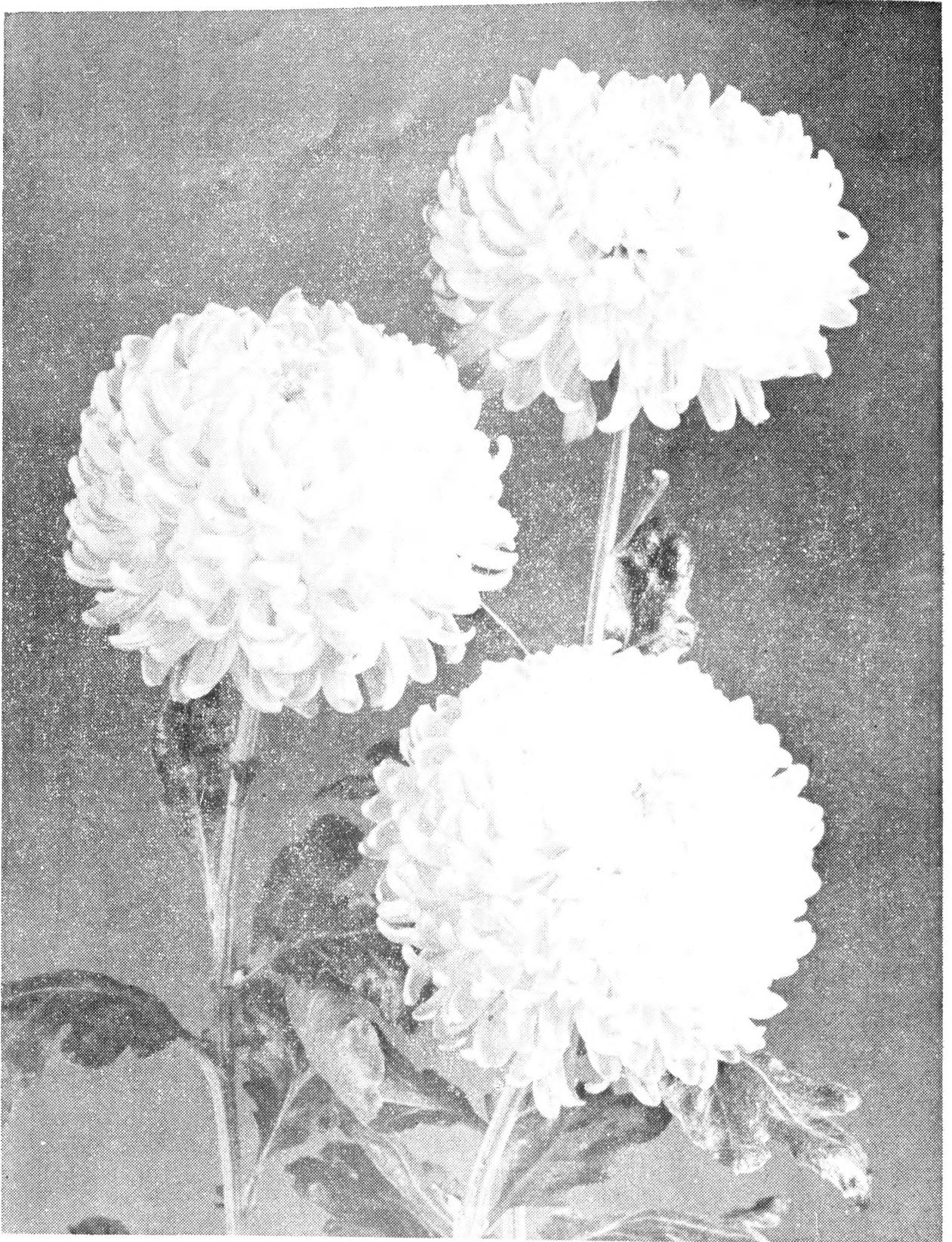


CHATSWORTH
COTSWOLD WHITE

RADAR

MARY ROSE
SALMON DAYDREAM

Courtesy of Colham Green, Ltd.



HAROLD PARK

Courtesy of Colham Green Ltd.

NEWER VARIETIES OF HARDY ENGLISH CHRYSANTHEMUMS

\$1.00 Each or Three of any one variety for price of Two.

ADORA—Lovely reflexed flowers of a medium shade of rose-pink that stands wet weather very well—Blooms in Sept. make a good market variety of a medium for show. A. M., Sept.

CHATSWORTH—This is one of the best early varieties ever raised. It seems to grow well everywhere and the bright orange-bronze color makes it very popular. Large blooms flowering in early Sept. F. C. C. at Wisely.

CONNIE UNA—Large, deep slightly incurving flowers of salmon-bronze. A color much desired. Heavy flowering variety. Sept.

FRED YULE—Rich orange-bronze, very full solid bloom of large size. Healthy dwarf grower with medium foliage. Sept.

INC. LOVELACE—A very good incurved sport of that beautiful pink variety Lovelace. Aug.-Sept.

LATE SUNBEAM—A later flowering version of the lovely SUNBEAM. A large bright yellow in big demand. Sept.-Oct.

HAROLD PARK—We consider this lovely deep buttercup-yellow variety outstanding. Very stylish incurving bloom of good size. Ideal dwarf habit with correct foliage. Sept.

MARY ROSE—A pleasing shade of light rose-pink with slight green center. A safe pink to grow as it stands all weather. Aug.-Sept.

MAYFORD TRIUMPH — A beautiful dark amber incurve of large size. Oct. 1st.

MERRY DEW—Large, reflexed, cactus type flowers of bright reddish-bronze. Very heavy flowering. Early Sept.

PEACH BLOSSOM — A very pretty shade of peach-pink, medium-size flower of nice reflex shap. Plant perfect in growth, very healthy and free-flowering and good early and late. Should make a good market variety or a medium for show. A. M., Sept.

RED FLARE—A very large reflexed flower of bright red with a golden center showing on mature blooms. This variety attains five inches across and the plant with its bright healthy foliage is noted for a very large number of blooms. Received the A. M. at Wisely. Be sure to exhibit this one. Sept.

REGAL — Unlike most varieties, this large flower wine-colored reflex with a biscuit reverse. Very unusual and outstanding. Aug.-Sept.

SANCTITY—An excellent, pure white variety that will produce many large flowers in Aug.-Sept. An excellent variety for both indoor and outdoors.

SALMON DAYDREAM—A very large salmon-pink of reflexed form that is admired by all who see it. Strong grower and heavy cropper. Aug.-Sept.

SHEILA PAGE—This is undoubtedly the best mum in this color we have as yet acquired. A real dark crimson, quite the color of Garnet King. Large reflexed flowers with twisted and rolled petals. Oct. 10th.

HARDY ENGLISH CHYRSANTHEMUMS

Perhaps by this time most of you have tried these Hardy English Chrysanthemums and know how good they are. We are offering the following varieties at reasonable prices.

.50 unless priced otherwise. Three of any one variety for the price of Two.

ALABASTER—A very early white of large size and good substance. Slightly incurved and will grow 5 inches across when disbudded. Sept.

BALCOMBE BRILLIANCE — Brilliant red flowers of very good quality. A vigorous grower and free flowering. Sept.

BRONZE AMBER VALE—Well shaped flowers of rich bronze on straight stems with medium foliage. This is new and will become popular. Sept.-Oct.

CHANCELLOR—Rich pink large stately slightly incurving bloom of large size. Good grower, strong stems with perfect foliage. Good show variety. Sept.

COTSWOLD WHITE—A very large flat petaled, reflexed flower of soft creamy-white. The flowers are of very good substance and quality and plant is floriferous. Sept.

EDGERTON SWEETHEART — Very beautiful salmon-bronze Sweetheart. An early bloomer. Aug.-Sept.

FLORENCE HARWOOD—A very large flower of bright rose with a golden center, overlaid with a suspicion of bronze, a very desirable shade. Blooms in Sept.-Oct.

MARY MONA—A lovely salmon-cerise with gold center. Flowers large and very free flowering. Received F. F. C. at Wisely. Sept.-Oct.

MOVOUREEN—Lovely lilac-pink, full robust flowers. Will attain 6 in. when disbudded. Blooms Sept.

PINK KING—A large incurved variety, nice-whether disbudded or not. Inside of petals are a purplish rose and the outsides are silver. Really a very lovely variety. Early Sept.

RADAR—A large, golden-bronze flower shading darker toward center. One of the best in this color and a lovely addition to your garden. Blooms Sept.

RADAR SUPREME—A new variety and is very much the same color as RADAR but of broader petalage, both can be disbudded for exhibition blooms. Blooms Sept.

ROSEVERN — Large flowers of deep clover carried on strong stems with small foliage. A very good bloomer. Blooms Sept.

SERENUS—A real variety. An extra large white, on long stems, and very prolific. An award winner in the flower shows of England and used in the Florist trade in London. Blooms Sept.

YELLOW ALABASTER Wierenga 1951 —A very lovely soft yellow sport of the lovely English Alabaster, 5 in. flowers just like its white component.

ODD VARIETIES AND INTERESTING FORMS

All of the Mums listed in this classification can be raised in the garden according to your frost date. They can be wintered in cold frames and kept over from year to year. Unless otherwise priced they are **35c** each.

ALBERT WITT—A clear yellow sport of "Bess Witt." Like its parent, this variety has luxuriant foliage and a vigorous growing habit. Height medium. October 10.

BUNBU—The large size tubulated petals are a beautiful shade of orchid pink. Oct. 25.

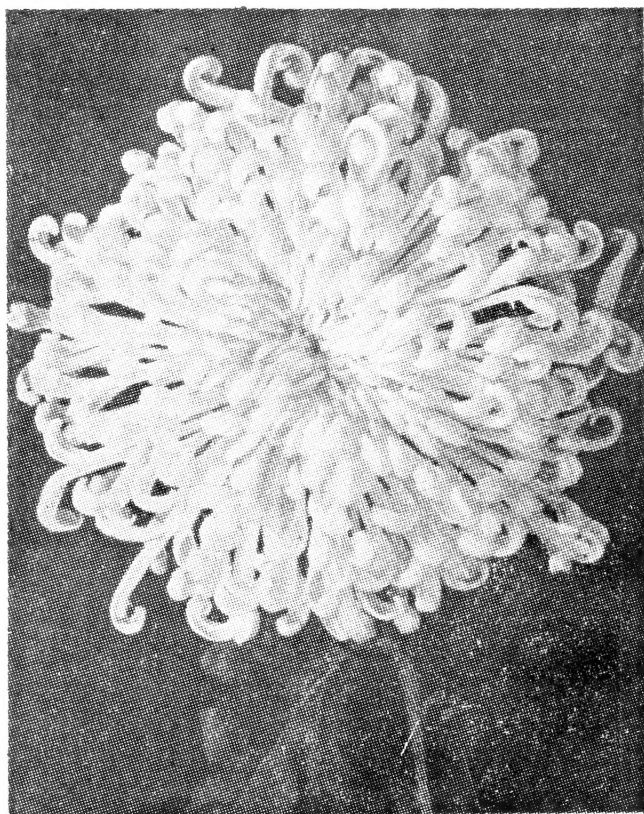
DALWIN—New—A large, lovely very light bronze spider. Oct. 20th. **Each \$0.40**

GEORGINA HEDINGER — This very full centered Spidery variety in pink ranks high among the early flowering varieties. Very graceful and distinctive in all respects. Height, medium. Oct. 1.

HOKED YELLOW LACE—New—The most beautiful of the LACES. A lovely yellow spider with hooked petals. Oct. 25th.

KAY TASHIMA — Huge white spider mum. Oct. 25. 24 inch.

MORIBANA—NEW—Large yellow spider that is adapted to pot plant culture. Oct. 20th. ----- **Each \$0.40**

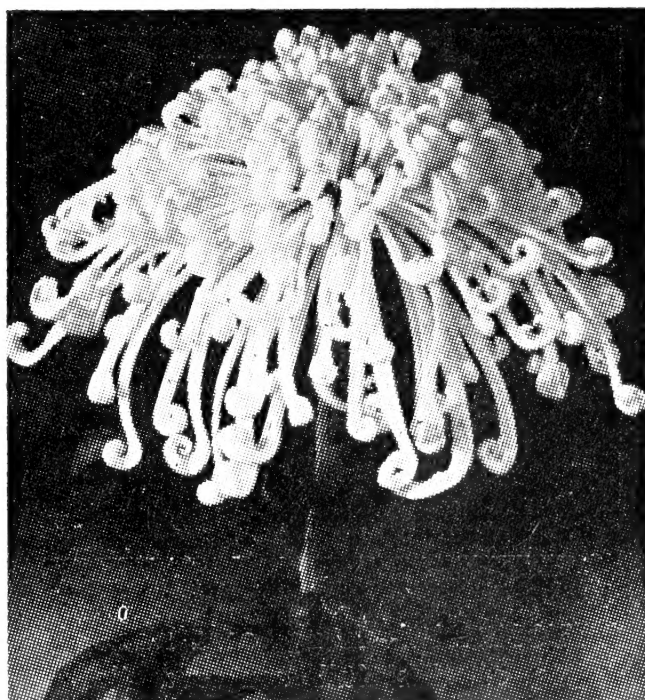


ALICE TASHIMA

ALICE TASHIMA—Full centered spider-variety in white. Has larger size quilled petals with hooked tips. Good stems and foliage. Height medium. Oct. 10th.

BESS WITT—It would be difficult to say too much for this outstanding early spider mum. Duo-toned coloring, shading from salmon to bronze. A very excellent cut flower here in the open field. Oct. 10th.

BLUSHWHITE S. Lehman. New—Large pert and crisp, chalk-white flowers overlaid with soft lavender. Tube and spoon equal in length. Never a mis-formed flower. The criterion for spoon Mums. Oct. 7.



MORGAN'S WHITE

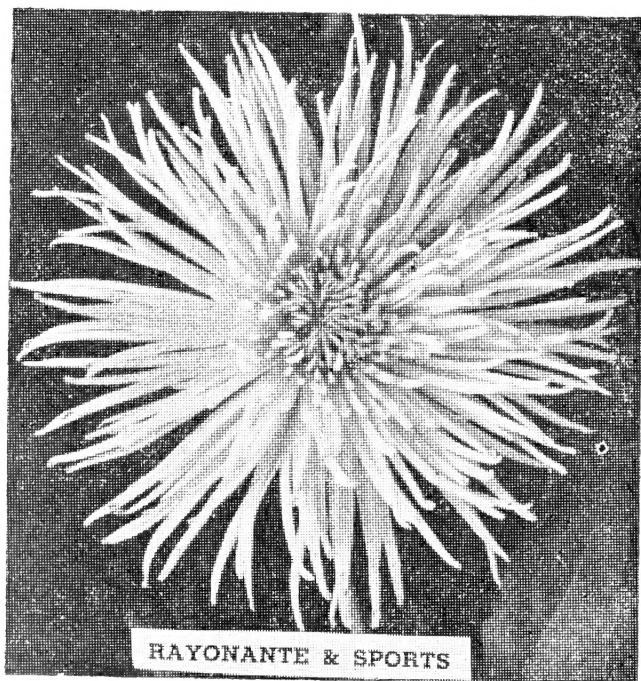
MORGAN'S WHITE — A pure white quilled type flower. The central yellow button begins to appear as it matures. The flower is of solid substance and lasts exceptionally well on the plant and after cutting. For this reason, this is a popular variety with the commercial flower growers. Height medium. Oct. 15th.

NIGHTINGALE — Most unique Char-treuse color chrysanthemum but will fade under strong sunlight. Therefore, we recommend a shade over the flower as soon as the buds begin to show color. Oct. 25th. ----- **Each \$0.40**

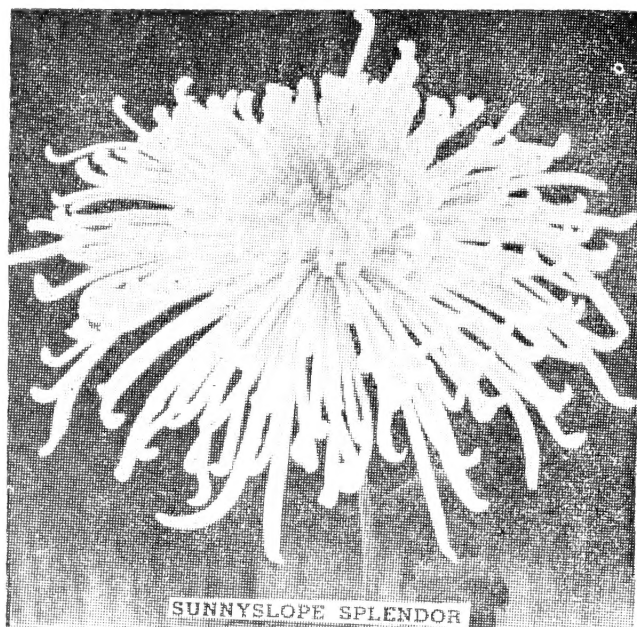
ORCHID SPOON — Orchid-pink spoon flowers in great profusion. Oct. 1st.

PAUL MILLER-Fascinating buff-bronze with darker center. 1953 National Mum Show Winner. Oct. 25th.

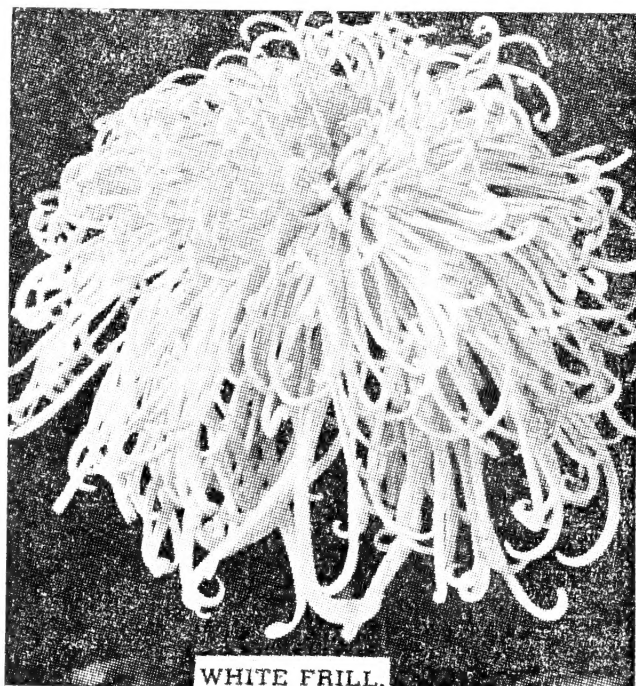
PEGGY ANN HOOVER — Light pink spoon tipped, quilled spider. Oct. 20. 24 inch.



RAYONANTE—Long cord-like quilled petals of this full centered flower is light rose-pink in color. Height, tall. Oct. 15.



SUNNYSLOPE SPLENDOR—Unparalleled glistening white full centered large flower with a light overcast of green throughout even at full maturity. Indisputably the most satisfactory and our foremost pride. Oct. 10-15. -- **Each \$0.40**



WHITE FRILL (S-A-15).—Exceptionally long frilly petals cascade from a fully double center of this remarkably large flower. Creamy white. Superb in this class. Oct. 20 ----- **Each \$0.50**

WILLA TEMPLIN—Ravishing golden bronze with large tubular petals. October 20. ----- **Each \$0.40**

YELLOW SPOON—A very large bright yellow spoon. Blooms Oct. 3

COMMERCIAL AND SHOW VARIETIES

All of the mums listed in this classification can be raised in the garden according to your frost date. They can be wintered in cold frames and kept over from year to year. Unless otherwise priced are **.35c** each.

AMBER BRIGHT—A large incurve of amber-bronze. Oct. 8th.

APRICOT QUEEN — Deep orange incurved. Oct. 25.

BEN LEIGHTON—We believe this variety to be best early flowering Exhibition flower in dark color. It is deep wine red, with slightly lighter shade on the outside of the petals. It is a perfectly globular flower of large size. Growth medium. Mature around Oct. 15. ----- **Each \$0.40**

DAME ENID LYONS—Lovely creamy white, perfectly formed, large semi-incurved flower. Oct. 15. ----- **Each \$0.40**

DR. J. M. INGLLIS—A large deep wine red incurved with silvery reverse. Blooms Oct. 25th. ----- **Each \$0.40**

ENCORE—The need for a good, late formal pompon, is our reason for adding this medium sized pure white. Blooms Nov. 1st. ----- **Each \$0.40**

FERN EDWARDS—A charmingly beautiful lavender pink giant flower equal in size to the "Turners." October 25. ----- **Each \$0.50**

GRANITE STATE—A very attractive med., incurve of purest white. An ideal pot plant variety. Oct. 15.

HARVEST GOLDEN—A medium sized incurve of very deep gold. Oct. 10.

HILDA BERGEN—Large deep mahog- any-bronze incurve. Oct. 25. 24 in.

INCURVED EDITH ALSTON—A new large pure white incurved that we have just imported from England and is an excellent exhibition type. Blooms Nov. 1st.

JOHN POCKETT — A rosy crimson broad petalled reflexed large flower. Oct. 25. ----- **Each \$0.50**

LILIAN DOTY — A large shell-pink pompon. Oct. 15. 30 in.

MAJOR BOWES—Large deep lavender pink incurve. Oct. 20. 24 in.

MAYFORD SUPREME—A very large incurved golden yellow we have just imported. Should be a show winner. Nov. 1st. ----- **Each \$0.50**

MRS. H. E. KIDDER D—Incurved flowers, 7 inches across, of bright golden yellow. The best of all large yellows. Oct. 15.

PINK CHIEF—Large lavender incurve Oct. 15. 24 inches.

PINK DOT—A clear pink, intermediate pompon with deeper pink center.

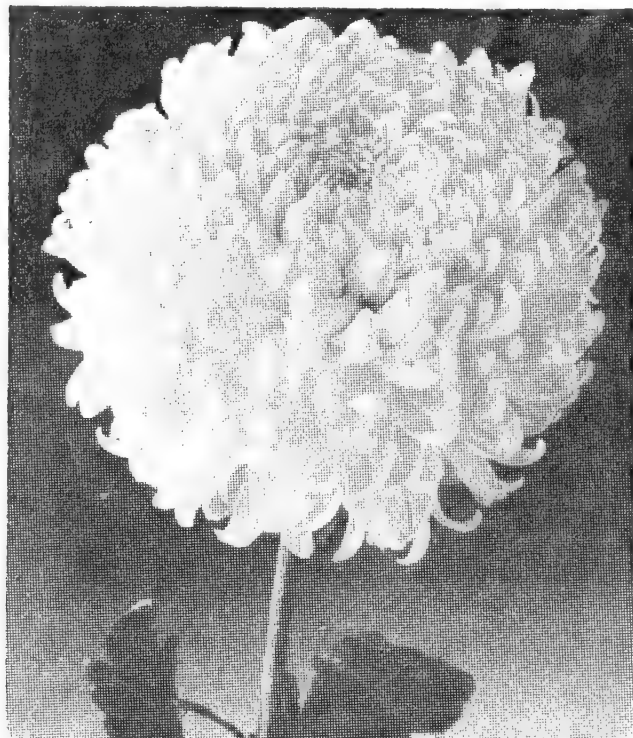
POCKETT'S MAROON — Enthralling shade of velvety oxblood red with buff reverse. Oct. 15. ----- **Each \$0.60**

QUEEN OF THE PINKS—A large pompon of deep orchid pink, suitable for disbudding.

RUBY LOVLINESS—A new imported, large, ruby-red reflex with ideal performance. Nov. 1 ----- **Each \$0.50**

SILVER SHEEN — Large satiny pure white incurve. Oct. 15. 24 inches.

WATANABE—Spectacular large incurved yellow. Perfectly formed and easily grown. Oct. 5 ----- **Each \$0.60**



WHITE CHIEF

WHITE CHIEF—Large white incurve. Oct. 15. 24 inches.

WHITE DOTY—Large white pompon. Oct. 25. 30 inches.



WILSON'S WHITE

WILSON'S WHITE—New importation. A lovely, low growing large flowered pure white. Ideal for pot plants or edging. Try this one. Oct. 25th. **Each \$0.40**

WINN QUINN—A very closely knit perfectly formed, incurved yellow. This plant will support ten to twelve very large blooms. An English favorite in shows. Nov. 1st. ----- **Each \$0.50**

YELLOW CHIEF — Large yellow incurve. Oct. 15. 24 inches.

YELLOW DOTY — Large yellow pompon. Oct. 15. 30 inches.

HARDY CHRYSANTHEMUMS

All mums in general listing except those especially priced will be ----- **Each 40c**
For your convenience, our mums are listed according to the month they bloom.

MUMS BLOOMING IN AUGUST

BUTTERBALL D (Longley)—the best early yellow to date.

GLACIER D (Longley)—An early pure white dwarf.

CODY (Viehmeyer) — One of the best cushions. Grows but 10 in. tall and up to 40 in. across. Flowers vary from white with lavender edges in July to glistening violet in cool weather.

GLADNESS—Fully double, clear china-rose, very free flowering, dwarf plant and one of the first to bloom. Blooms August 28.

MUMS BLOOMING IN SEPTEMBER

ADMIRATION D (Bristol)—An exquisite double 3 inch bloom in a vivid but mellow harmony of bright peach, salmon-fawn and soft red-gold flushes. Rugged 2 to 2½ ft. plants as hardy as the hill. Late Sept. ----- **Each \$0.75**

BETTY D (C-P)—The nation's favorite salmon-pink.

BOWL O' GOLD D (Bristol) 1953—A brilliant cushion Mum with shapely 2 in. pompons of gleaming canary-yellow. 1 ft. tall with a 2 ft. spread. Just the plant for corners, rock gardens and etc. Sept. 10th. ----- **Each \$0.75**

ALERT—Becker—Large, fully double, 3 in., dark purple flowers that do not fade. Sturdy stems, ideal for cutting. A hit in our display beds. Hgt. 22 in. Sept. 20th.

CHAS. NYE D (Kraus)—Favorite golden-yellow pompon.

CHIPPEWA D (Longley)—A large aster-purple. None like it. M

CHIQUITA D (Kraus)—Canary-yellow button pompon. M

CHRIS COLUMBUS D (Rosebud)—New outstanding ivory-white. Excellent for cutting. M

COPPER & GOLD D (Donaldson) 1954—This new cushion was grown by us this past season as a guest plant and was admired by all who saw it. Flat topped 10 to 12 inch plants with a 30 inch spread. The attractive closely knit plant is hidden with hundreds of flowers from mid-Sept. on. Buds are a glowing orange-red which open to bright golden yellow flowers with darker centers. Takes on coppery hues with cooler weather. Ideal for corners or rock gardens. A must have. -- **Each \$1.00 net**

COURAGEOUS D (Kraus)—A beautiful dark ruby red with 3½ inch blooms. T

EARLY CRIMSON D (Lehman) 1953—A grand crimped petaled, bright crimson. Flat flowers on rigid upright plants. Very hardy. Sept. 14th.

EARLY GOLD — Bright golden-yellow pompon with dark green foliage. An excellent border plant. Blooms Sept. 12th. S

EARLY ROBIN—Becker—A very early compact mound completely smothered with two toned flowers of bronzy-yellow with distinct mahogany-red centers. Hgt. 15 in. Sept. 10th.

EARLY WONDER IMPROVED—A great advance in pink pompons. Rich deep pink, not cold or coarse, fine fut flower, 2½ ft. Late Sept.

FASCINATION D (Bristol)—New 1952. Stunning 4-inch silvery lavender-pink, a little deeper at center; buds rosy red. It occasionally throws a flower of creamy white. Sept. 28 -- **Each \$0.60**

GOLDEN HOURS D (Kraus)—A deep lemon-chrome with broad petals. M

GONDOLIER D (Bristol) 1953—An indescribable wine-dipped crimson-vermilion, claret-toned gem. Faintly silver dusted 3½ in. blooms at maturity. 2½ ft. Late Sept. ----- **Each Net \$0.75**

HOLLIDAY D (Kraus)—A large old gold to bronze decorative. Fine in sprays. Hardy and very prolific. -- **Each \$0.50**

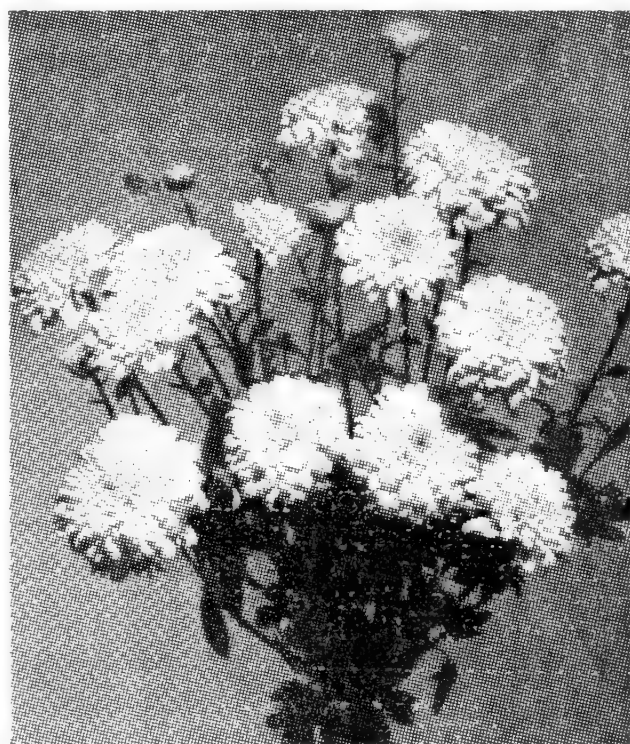
JAYEFF D (Martin) — Four-inch, full double flowers of deep positive pink, with a dazzling, drifting sheen. Holds color till frost. 24 in. Sept. 25.

KATHLEEN LEHMAN — Brightest orange-gold, deeping to red-gold at the centers. Blooms Sept. 28.

LEE POWELL D (Kraus 1951)—Large, impressive flowers of Chinese-yellow to orange-yellow at center. Prolific. "Lehman's Mum of the year." Blooms Sept. 23rd. ----- **Each \$0.50**

MADAME CADILLAC—Mulberry wine red, solid large Pompon type of great substance. Strong bushy and compact habit. Blooms by Sept. 20 and last well into late Oct. M

MALINDA BROWN—Kraus, New 1952 —A very lovely, free flowering incurve in lavender rose. Hardy. -- **Each \$0.60**
M



MOONLIGHT
A new soft yellow, solid flowered variety to late Sept.

MOONLIGHT—DePetris New 1952—A 3 inch, very full, formal decorative of vivid soft yellow. Solid flowers of lasting quality for cutting. Good stems and foliage. M. ----- **Each \$0.60**

NYES FAVORITE—And one of our favorites is this lovely lavender pink decorative. A reliable bloomer with good keeping qualities.

OLIVE LONGLAND D (Kraus)—3 inch blooms of apricot toned salmon-pink. M

PATRICIA LEHMAN—A sparkling geranium pink with peach center. Recurved and twisted petals give a feathery effect. An upright grower. Blooms Sept. 28. M ----- **Each \$0.50**

PEPITA D (Kraus) — Densely quilled button pompon of egg shell-white. M

PATHFINDER D (U. N. 1953)—The Carnation flowered mum. 3 in. full, high centered bright yellow with petals notched and lacinated. Very hardy. Sept. M ----- **Each \$0.50**

PLAINSMAN D (U. N. 1953)—Another carnation flowered mum of bronze. Flowers are notched and lacinated on terminal clusters of from three to five. Ideal for cut flowers and corsages. Very Hardy. Sept. M. ----- **Each \$0.50**

POLAR ICE — Clear ice-white, large double blooms from early September on. Plants are very free-flowering. M

REMEMBERANCE—Deep ruby carmine color that is retained for the life of the flower. Finest red to date. Blooms Sept. 27

RONNIE (Floralane)—Tiny purplish-red, yellow centered pompons on tall bushy plant. Ideal cut flower. Oct. 15. T

RUSTY RED D (Lehman) New 1953—The earliest and longest lasting red in existence. Opens cherry-red aging to a live rust. Very prolific bloom. Sept. 14. M. ----- **Each \$0.60**

SALUTE D (Martin)—Cushion type plant with medium sized blooms, deep purple. The extremely bushy 12 in. plant is covered with blooms from Sept. 5th to frost.

SEPT. BRONZE D (Cummings — A golden-bronze cushion type pompon. S

SEPT. CHEER D—A good cherry-red.

SEPT. DAWN D—Large, bright rose-pin. M

SEPT. SUNSHINE SD—A free flowering early yellow. M

TIFFANY ROSE—A medium sized single of deep rose. A very lovely variety in the singles.

WHITE CLOUD (Univ. of Neb.)—Large pure white decorative. Improves Avalanche in flower quality, plant vigor, and frost tolerance. Recommended for garden culture and pot plants. -- **Each \$0.50**

YELLOW CHRIS COLUMBUS—1951—A lemon-yellow sport of the well known Chris Columbus, welcomed by commercial growers for the cut flower value.

MUMS BLOOMING IN OCTOBER

ALEX CUMMINGS D (Bristol) 1952—Vivid Cerise, softly shading to rose with gold tinted centers. 4 inch blooms, incurved at centers, recurving at petal ends on 2½ ft. lusty plants. Oct. 3. ----- **Each \$0.75**

AMBER GLOW D (Youdath)—A brilliant rosy-bronze. S

ARGONNE D (DePetris)—A fully rounded button type pompon of very rich amaranth purple. (1949). M

BEACON D (Kraus)—Coral-apricot to flaming nasturtium-orange at center. A tall plant with large blooms. Excellent cut flower. T ----- **Each \$0.50**

BLACK VELVET D — A bushy plant loaded with medium sized blooms of real dark red. Oct. 10th. S

CARMINE QUEEN D (DePetris)—Tall Dark, Carmine-red. A very luxuriant cut flower. Oct. 10th.

CARNIVAL D (Bristol)—Large blooms of burnt orange blend that gleams. T

CHOPIN D (DePetris) 1954—Imagine a 4 to 4½ inch, incurve bloom of light bronze on medium size plants with long stems for cutting. 20 or more blooms

on well grown plants. Very Hardy. Oct. 16th. ----- **Each \$0.60**

DAWN ROSE D (Kraus) — Flower is grenadine to bittersweet-pink, lightening to bright flesh color at the margins. (1949). M ----- **Each \$0.60**



ELIZABETH HOOD
Vigorous, tall, strong stemmed lavender pink.
Early October.

ELIZABETH HOOD DePetris New 1952 — A very large pompon of vivid lavender-pink. A solid flower on strong stems and healthy, lush foliage. Welcomed in commerce as an ideal cut flower. Oct. 12. ----- **Each \$0.60**

FIESTA D—A very brilliant pom of orange-rust and very frost resistant. Oct.

HUNTSMAN D (Bristol)—Vivid scarlet-orange overcast with walnut-bronze. Lovely 3 inch blooms. Very prolific and hardy. (1949). M

IRENE—An ideal cut flower type button of pure white with yellow center. T

JUBILEE D (Bristol) New 1952—Opens crimson, mellowing to a deep clear red. Plant all aglow for weeks. Oct. 1. S ----- **Each \$0.50**

JUDITH ANDERSON D (Bristol) — Masses of golden-yellow buttons.

LAVENDER LADY D (Bristol) — The only 3 inch true lavender. Very hardy. T

MAGNIFICENT D (Kraus) — Glorious 4-inch flowers of plum-red or rosy cardinal, with coppery cast. Strong branches, excellent for cutting. T -- **Each \$0.50**

MASQUERADE—A much hardier hybrid of the old favorite Jewel. A rounded 2 foot mass of 1 inch balls of silvery-rose with darker centers. Glistens in the October sun, appearing almost deep lavender. M ----- **Each \$0.75**

MISCHIEF S (Bristol 1953) New—A piquant little gamin you will adore. Hundreds of tiny sparkling rubies studded like velvety stars astride a rich green world. Single one inch blooms of beet-purple to amaranth and deep rose blanket this 18 inch plant. Dainty sprays for corsages. The Mum that looks like a

CINERARIA. Oct. 1st. -- **Each Net \$0.75**

MRS. P. S. DUPONT D (Cummings)—A peach-pink blended with rosy-bronze and a salmon cast over all. A very popular mum that is here to stay. M

MYRTLE WALGREEN D (Kraus) — Rich amaranth-purple, underlaid with silvery lilac, aging to clean, clear mallow-purple. Excels Chippewa. M

NOCTURNE New — A deep crimson medium sized pompon. A new color in this size pom. Used commercially for the cut flower trade. Oct. 10. M

NYTODA (DePetris) Oct. 12 — Good sized, duplex daisy with excellent substance. Color golden apricot. Makes good sprays on strong stems 30" to 36". An excellent daisy with healthy growth and fairly good production. A good cutting variety.

RED RIDINGHOOD D—A good bright deep red. M

ROBINHUE Y 1951 — A very double large red, decorative pompon. A very good show type. Blooms Oct. 15.

HUBY POM D (Bristol)—A very good ruby-red pompon.

SILVER PLATE New—A lovely pure white decorative. Excellent for cutting. M

SPINDRIFT (B. N., 1952)—Symmetrically sculptured, artlessly appealing is this divinely formed white treasure. Faintly dahlia-like, faultlessly double, 3-inch flowers with only the most minute hint of cream in centers. Statue-sque 2-foot plants with wonderful short cutting sprays. October 3. -- **Each \$0.60**

WINTERSET D (Peck)—Strong-growing, large snow-white. A valuable addition, as it blooms with Mrs. DuPont and Red Velvet. T

YELLOW IRENE—A light lemon yellow button used for cut flower trade. M

OUR TOP TEN COLLECTION

ADMIRATION -----	.75
ALEX CUMMINGS -----	.75
BOWL O' GOLD -----	.75
CHOPIN -----	.60
COPPER & GOLD -----	1.00
ELIZABETH HOOD -----	.60
FASCINATION -----	.60
MISCHIEF -----	.75
MOONLIGHT -----	.60
SPINDRIFT -----	.60
Catalogue value -----	\$7.00

All Ten Postpaid — \$5.50

HARDY CUSHION MUMS, Each 50c

ALL TEN for \$4.00 Postpaid.

APRICOT GLOW—A glowing apricot bronze Azalea-like cushion Mum. In full flower by late summer, the profusion of bloom persists. Handsome mound-like plant 2½ ft. or more across. Sept.

CAPT. J. SMITH 1953—A newcomer to our garden and one of our best sellers. Very floriferous double bloom of lavender-pink on sturdy, healthy plants. Sept.

CHAMPION CUSHION—Reddish deep bronze, a distinct color. Sept. 28.

COMMANDER CUSHION—The best red cushion to date. Sept. 25.

MAJOR CUSHION—This one is a valuable addition to the Cushion family, filling a definite color position with its bright salmon-pink flowers. Its habit and character are superb, flowers full petaled, firm and solid, and very abundantly carried. Its prime importance is in the fact that its color does not fade. Sept. 25.

MAHOGANY CUSHION D (Lehman)—Twisted petals of jasper-red shading to mahogany. Large cushion plant. Sept.

SAM WILLISTON New—A lovely fiery red cushion of perfect form. Oct. 1st.

WHITE CUSHION—Fully double white flowers in Sept.

YELLOW CUSHION—Pure golden yellow, very brilliant. Sept. 28.

YELLOW SUPREME — A new bright sulphur yellow of unusual vigorous habit and long lasting quality in flower. Oct.

DAYLILIES (HEMEROCALLIS)

Floral enthusiasts have found that the Hemerocallis belongs in the garden, not to replace the spring bloom of Iris and Peonies or the fall blooms of the lovely Chrysanthemum, but to fill in that much needed mid-summer bloom. Day by day this beautiful flower is becoming more and more in demand. Hardy from coast to coast and one that will thrive in any garden soil.

CULTURE OF DAYLILIES

TIME TO PLANT. Daylilies may be planted during the spring, summer and fall. Local conditions will govern the best time for planting, which should be done at a time when the plants will be able to establish themselves and begin prompt growth. Fall planting should be early enough to permit the plants to become well established before cold weather. Daylily roots are packed damp and should not be allowed to dry out.

PLANTING. In planting spread the roots naturally and cover about two inches with pulverized soil. The exact depth will depend on the size and type

of the plant, but it is usually easy to tell from the color of the leaves the depth at which the plant has been growing. Too deep planting is injurious. Firm the soil so that roots and crown are in good contact with the soil. Water after planting if the ground is dry.

We reserve the right to fall ship any variety we happen to be short on.

ADAGIO (Russell)—3 ft. May-June. An unusual brilliant red with deeper eye zone and small yellow throat. **Each \$1.00**

AFTER GLOW (Stout)—3 ft. July-Aug. A delicate and charming blend of pale buff and apricot with a rosy tint in throat. ----- **Each \$2.00**

***AMUR VALLEY (Marshall)** — Broad petaled self of deep yellow with coloring running clear to center of the flower. It is an early bloomer, and we like it fine. 2½ ft. ----- **Each 1.00**

ANNA BETSCHER — (Betscher 1930) deep orange-yellow shaded reddish bronze. 3 ft. July ----- **Each \$0.50**

ANNIS V. RUSSELL (Russell) — 3 ft. March-April. Huge well formed flowers of canary-yellow. As many as 30 six to eight inch blooms on established plants. ----- **Each \$1.00**

APRICOT (Yeld 1892) — Light apricot orange, very early, 24 in., de. **Each \$0.75**

APRICOT DREAM (H. M. Hill 1949)—An apricot toned self of fine form and color, good sized flowers, quite tall, up to 60 inches, midseason. ----- **Each \$2.00**

ATEN (Kraus)—6 in. flower of clear, brilliant Nasturtium - orange. Well branched with 30 to 40 buds. 24 in. July. ----- **Each \$6.00**

ATHLONE—The petals of this giant bloom are a deep rose with a darker rose eye zone. The sepals are canary-yellow. Hgt. 4 ft. May-June. **Each \$2.00**

AUGUST ORANGE (Stout 1946)—New golden orange, a profuse bloomer on wide branched stems, midseason, 36-inch de. ----- **Each \$1.00**

AUT. MINARET (Stout) (New)—Ideal for background planting. Golden throat with rounded sepals and petals overcast bronze-red. Aug. to late Sept. 5½ ft. ----- **Each \$3.00**

AUTUMN PRINCE (Stout)—Clear, light yellow flowers on many well branched stalks about 3½ ft. tall. Flowers even tone of good size and texture. The best late, clear yellow, to date. Fine for fall bloom from August to frost. **Each \$1.25**

AUTUMN RED (Nesmith) ML. 32"—An open velvety red with a striking star of yellow in the center of each bloom. Ideal for foreground variety. **Each \$1.00**

BALLET DANCER (Nesmith) M. 36"—Appealing, dainty, smooth soft buff to grenadine pink. Lustrous full formed flowers. ----- **Each \$2.00**

BARONET (Stout) EM. 30" Ev. — A sprightly brazil red with orange throat. One of the earliest blooming reds and its second crop of bloom is welcome. ----- **Each \$0.50**

BEL MAR (Bechtold)—Large brilliant scarlet and mahogany flowers borne on slender branching stems during July. The plant makes an excellent clump and is a good multiplier. ----- **Each \$1.00**

BERWYN—A brilliant, attractive red, listed as carmine, with delicate yellow throat. Hgt. 33 in. June-July. **Each \$2.00**

BESS VESTAL (House) 36"—This is a very showy red, having nice width in the petals, we think it is a very fine red. ----- **Each \$3.00**

BETTY SLICK (Russell)—This is a real bicolor, the size and shape of Hyperion. The sepals being the same color as Hyperion. The wide petals are a most brilliant rosy red. 3 feet. June-July. ----- **Each \$1.00**

BI-COLOR (Stout)—Delicious. As the name signifies with petals of pale red tinged rose shading to a yellow. Sepals are yellow. Very effective. July-August. 42 in. ----- **Each \$1.00**

BLACK CHERRY (Douglas 1945)—Rich unfading black-red that stands out. Medium size flowers beautifully formed, with recurving petals and sepals. July. 3 ft. ----- **Each \$2.00**

BLACK EMPEROR (Russell) — 4 ft. July. Five inch flowers of dark red with a deep yellow throat. ----- **Each \$0.75**

BLACK FALCON (Nesmith 1941)—Extremely dark daylily with only a shallow cup of pale canary. Large, open and wavy at the edges. July. 3 ft. ----- **Each \$2.00**

BLACK HILLS (Russell 1947) — Black purple self of neat rounded form, very rich deep color tone, 36-in., de. **Ea. \$1.00**

BLANCHE HOOKER (Stout)—A very bright early flowering red with rich orange cup. When established flowers almost all the season, and is especially generous with a shower of autumn flowers. Evergreen. 3 ft. ----- **Each \$2.00**

BLACK PRINCE (Russell 1942)—Deep blackish red, very rich and impressive. Small cup of deep yellow. Wide segments. 5 in. bloom opens full. **Each \$2.00**

BOLD BEAUTY (Hill) ML. 38"—Selected as one of the finest, largest red toned blends. Blooms over an extra long season, new stems constantly coming until frost. ----- **Each \$3.00**

BOLD COMMANDO (Thompson) — A lovely tall red. Bold as the name it carries. A very good plant for background use. June-July. 42 in. **Each \$0.50**

BOLD COURTIER (Nesmith) EM. 35"—Without question this is one of the fine Daylilies. It is a stunning and striking Pempien rose and soft yellow bicolor; width of petal, carriage, all excellent. ----- **Each \$2.00**

- BOUNTIFUL** (Cook 1943) — Wide-petalled lemon yellow seedling from Hyperion. Large, nicely formed and sun-resistant. July. 3 ft. ----- **Each \$1.50**
- BRIGHT ANGEL TRAIL** (Hill 1952)—Striking brick red shade with a prominent light almost white stripe on the midrib, it is slightly bicolored as the speals are overlaid with petal color, petals are wide, bell shaped at first, the speals recurve as the flower expands, 34 in. June-July. ----- **Each \$8.00**
- BRILLIANT GLOW** (Schreiner) — A very heavy petaled flower of richest orange, 34 in., July-Aug. -- **Each \$3.00**
- BRUNETTE** (Stout)—One of the earliest reds to bloom. The full flowers are medium in size, and the plants bloom profusely. June. Evergreen. 36 inch. ----- **Each \$1.00**
- CABALLERO** (Stout)—A distinct bicolor, petals vermilion red, throat and sepals golden yellow on stalks 3½ ft. tall, flowers of good size and blooms in July and August. A tall, gay and brilliant addition to the summer garden. **Ea. \$1.00**
- CAPISTRANO** (Milliken) — Bright yellow, early and long flowering, 36 inch. ----- **Each \$1.50**
- CAPRICE** (Stout 1946)—Rich brownish red with cadmium throat, dainty and attractive, early, 24-inch, de. **Each \$2.00**
- CAPTAIN BLOOD** (Russell)—Very neat and brilliant red, richly colored, mid-season. ----- **Each \$2.00**
- CATHAY** (Stout) 38"—The dominant colors of the flower are a golden-orange in the throat and scarlet-red on the blades, the shade at the throat is almost carmine. ----- **Each \$3.00**
- CERISE** (Wheeler 1947)—Striking scarlet with rosy-crimson overflush, tall and imposing, 36-inch, ev. ----- **Each \$4.00**
- CHALLENGER** (Stout) — Mid-July to late Aug. 4 ft. A distinct shade of lively and bright cardinal to cherry red. Medium large blooms of broad petals with a pronounced light midrib. Greenish yellow throat. Robust and vigorous. Lush foliage. Some have classed it as bright, deep pink. Good evenings. Evergreen. ----- **Each \$3.00**
- CHARIOTEER** (Nesmith, 1941)—Large open lily shaped flowers of Brazilian red and cadmium yellow borne on very tall highly branched scapes. The broad, brilliant petals are fluted at the tips and have a decidedly yellow midrib extending into the rich yellow cup. July-August. ----- **Each \$0.75**
- CHENGTU** (Stout)—3 ft. July. Coppery orange-red with velvety carmine mid-zone. ----- **Each \$0.50**
- CHLOE** (Nesmith)—Full ruffled flowers with broad petals, deep yellow background flecked and powdered golden sepia. Unusual for both form and coloration. 3 feet. August. ---- **Each \$1.50**
- CIBOLA** (H. M. Hill 1949)—A distinctive new color tone, Spanish yellow, a golden orange that is very attractive, large broad flowers of rounded form, mid-season, re-bloomed in 1950 ----- **Each \$4.00**
- CITY OF AMARILLO** (Russell)—A very lovely 5 in., fully open bloom of pale golden yellow. May and again in Sept. 3 ft. ----- **Each \$1.00**
- CITY OF MEXICO** (Russell, 1946) — This is a very fine 6-inch flower. The red-wine petals have a wide deep purple eye zone with a wide almost white midrib. Ruffled, opens full, and has a most beautiful shade of yellow in its throat. The vividness of this color pattern represents the bright colors found in Mexico. ----- **Each \$1.00**
- CLARRICE** (Russell)—3½ ft. A lovely salmon with delicate yellow throat. June July. ----- **Each \$1.00**
- COLONIAL DAME** (Milliken) EM. 34"—A large light apricot with wide open flowers, the petals are ruffled most charmingly. The mother of Madrigal and Capri. July 3 ft. ----- **Each \$2.50**
- CONSTANCE** (Hill) ML 38"—One of the outstanding new daylilies. An extra large 8-inch flower, bright red-toned blend. Of added value is its continued blooming. ----- **Each \$3.00**
- CORALLINE** (Nesmith)—Large pale yellow flowers heavily flushed shrimp pink. ML. 36" ----- **Each \$1.00**
- CRAEMORE HENNA** (Plouf)—Tan red of good size and form, blooming in early mid-season. June-July. 2½ ft. **Each \$1.00**
- CRAEMORE RUBY** (Plouf 1938) — Intense ruby self, 36-inch, de. **Each \$1.00**
- CREAM FRILLS** (H. M. Hill 1948)—A very vigorous exceptionally free blooming frilled cream, makes a fine mass display, 36-inch, de. ----- **Each \$2.00**

CRIMSON STAR (Douglas)—The best red to date. Large open flowers of crimson with a deeper halo of red just above the throat of golden yellow. 3 ft. ----- **Each \$7.50**

CROWN OF GOLD (Nesmith 1933) — Large, early, orange-yellow blooming with the iris. May-June. 3 ft. **Each \$0.50**

CRYSTAL FAIRY (Russell)—A light brick rose with a deeper halo. Really a good bloomer. 3 ft. July. -- **Each \$1.25**

DAUNTLESS (Stout)—3 ft. July-August. Pale yellowish orange. Large wide overlapping petals. Fine. -- **Each \$0.50**

DESERT SUNRISE (Bechtold)—A large flower of sunstone and chrome orange that glitters in the sun as if sprinkled with gold dust. Long blooming period from mid-summer on. 46 in.--- **Each \$2.00**

DIXIE BELLE (Russell) 48"—Chinese-red daylily with green throat, it has rich, deep eye-zone in the throat and the combination is quite striking. Blooming from late June through July, it is well worth having in the garden. ----- **Each \$1.00**

All Star Collection

COLONIAL DAME
DESERT SUNRISE

GARNET ROBE
PAINTED LADY
YELLOWSTONE

Catalogue Value \$13.00. All five for \$10.00 Postpaid.

COMET (Russell)—3 ft. July. A fine bicolor 6 in. flower with blended rose petals and soft yellow sepals. **Each \$0.75**

CONFUCIUS (Bechtold)—A very bright red flower of immense size. Starts blooming in July on heavy stems. ----- **Each \$1.00**

DOLLY VARDEN (Nesmith, 1933) — Open full flower of Chinese coral pink with lines of rose on petals and sepals blended into a creamy yellow throat. June-July. 3½ ft. ----- **Each \$1.00**

DOMINION (Stout)—Large flowers with broad sepals and petals—reddish brown in color with yellow throat. Blooms June-July and again later in season. 3 ft. ----- **Each \$1.00**

DOROTHEA (Lester)—The 6-inch flowers have a soft, unusual, and very beautiful coloring which gives an orchid-lavender effect. The petals have a light yellow ground color which is flushed with heliotrope and also have a deeper heliotrope eye zone; the sepals are pale yellow. de. 2½ ft. ----- **Each \$2.00**

Red Garden Collection

DOMINION
DR SLAUGHTER

MOROCCO RED
MRS. HUGH JOHNSON
MRS. JOHN J. TIGERT

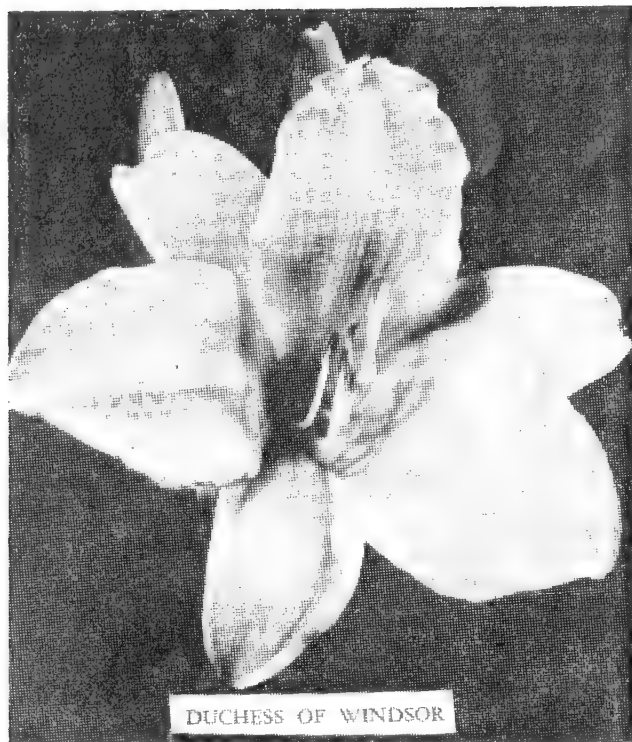
Catalogue Value \$5.25. All Five for \$4.25 Postpaid.

DOROTHY McDADE (McDade 1939)—Clean pure light yellow in a tubular-shaped 5 inch flower blooming late (Sept.) in the north, July-Aug. here 3½ ft. Evergreen. ----- **Each \$0.75**

DRESS REHEARSAL (Russell)—Petals and sepals are salmon-pink with old-rose eye zone; the throat is yellow. These larger, widely open, full blooms will give added beauty to any garden. Keeps well in the evening. Ht. 3½ ft. May-June. ----- **Each \$1.00**

DR. SLAUGHTER (Russell) — A fiery red daylily with an orange stripe through each semi-recurved petal, and a small orange throat. 3½ inch bloom. Height 2½ ft. June-July. (1947 Evergreen). ----- **Each \$1.00**

DR. STOUT (Traub, 1938)—36 in. M. Ev. A brilliant sunburst coloring. Ground coloring deep orange with a sprightly red dusting or burnished red. **Each \$1.00**



DUCHESS OF WINDSOR (Traub) — Cup shaped blooms, shading from light cream to buff with a delicate flush of rose in the throat. Very popular with Hem lovers. Hgt. 32 in. Blooms June and again in late August on established plants. ----- Each \$1.00

DUSK (Hill 1952)—Dark reddish black with a sunburst throat; good stems and branching, very floriferous, darker and earlier than others in its class, wide petals, medium size, good substance, holds color, first bloom June 9, 30-inch. ----- Each \$2.00

EARLIANA (Betscher) E. 36—One of Betscher's finest varieties, and extra early blooming golden orange toned flower, a prodigious bloomer. Each \$1.25

EASTER MORN (Wheeler)—M. 38 in. Large Amaryllis-like flowers of a deep buff-yellow with a mid-zone. Petals of extra heavy texture. ----- Each \$3.00

EVELYN CLAAR (Kraus)—A wide petaled salmon-pink that is in big demand. One of the best pinks to date. Flowers of firm texture and sun resistant. ----- Each \$10.00

E. W. YANDRE (Hayward)—Wide open creped edge flowers of reddish-brown and gold. 2½-3 ft. July. ----- Each \$0.75

FANTASIA (Stout 1946)—Orange, brown and red over yellow, segments usually quite twisted, 48-inc, ev. -- Each \$1.00

FELICE (Kraus)—A very large 6¼ in. flower of pale cadmium yellow lightening at petal edges. Heavy substance and non-fading. Mid July to Sept. 40 in. ----- Each \$2.50

FIRE OPAL (Nesmith) — Zinc-orange flowers that are very brilliant and handsomely recurved. Aug. 38 in. Each \$3.00

FLAMING SWORD (Russell) 20"—This is a brilliant red-orange that makes quite a display in the border from June through July. ----- Each \$0.75

FLAMING VELVET (Nesmith) — The finest red from Mrs. Nesmith to date. Glowing scarlet enhanced by velvet like sheen. Rich yellow throat, 2½ ft. June-July. ----- Each \$5.00

FLANDERS (Lester)—A 4½ in. bright red self with yellow throat. Wide, overlapping petals. Sun proof. Stands up well in all weather. Hgt. 3 ft. Each \$3.00

FOND CARESS (Miliken 1952)—A pale creamy-yellow lily shaped flower with broad petals and sepals. Very fragrant. Remontant. 3 ft. ----- Each \$15.00

GAIETY (Betscher) — Wide open light lemon-yellow, large, wide-petaled and quite early. Tall, well-substanced and outstanding. June. 4 ft. ---- Each \$1.50

GARNET ROBE (Milliken) — Popular glowing deep velvety red hemerocallis, with a yellow-green throat, which has proven to be an exceptionally good performer the country over. It has a luminous quality which makes it most useful in the garden. 3 ft. Evergreen. ----- Each \$4.00

GAY TROUBADOUR (Nesmith) 36"—A most unusual red and cream bi-color, the flower having a form that flares open, its stunning in the garden. ----- Each \$2.00

GEORGIA (Stout)—M. 38 in. An excellent variety with wide petals and large flowers. Buff with delicate rose tints reminiscent of peach colors. One of our favorites. Evergreen. Each \$3.00

GEORGE KELSO (Traub) — Splendid large flower with pronounced ruffled petals. The soft light orange coloring is suffused with bronze, the sepals being somewhat lighter in color than the petals. Vigorous, blooms in June and July. 36 inches. ----- Each \$0.75

GLORY (Bechtold)—An immense, clear yellow with broad ruffled petals and sepals of firm substance. This one has entered the rank of aristocrats and will be a glory to your garden for many years. June-July. 26 in. ---- Each \$2.00

GLOWING GOLD (Nesmith) M. 33 in. —Imagine large blooms, lightly twisted, a showy shade of brilliant orange, stunning. Very fine. ----- **Each \$3.00**

GOLD BEARER (Russell) 36"—This is a gold-yellow, having 6 in. ruffled flowers. A wonderful addition to any garden. Blooming over a very long time. ----- **Each \$1.00**

GOLDEN GIANT (Sass)—A very large, imposing flower of purest golden-yellow. We will hear more from this flower as it becomes better known. July-Aug. ----- **Each \$3.00**

GOLD MEADOWS (Russell)—A huge, six inch, slightly ruffled flower of firm texture. A tall flower of lightest canary-lemon. May-June. 4½ ft. **Each \$1.00**

GOLDEN WEST (Sass)—Lovely large funnel-shaped flowers, a deeper shade than Sunny West. Blossoms are of heavy texture making this a wonderful garden variety. 4 ft. tall. July-August. ----- **Each \$0.50**

GOLIATH (Bechtold)—In good rich soil, kept damp at blooming time, one can expect mammoth 7 inch wide open, deep yellow flowers. A very prolific bloomer. July. 26 in. ----- **Each \$1.00**

GRANADA (Traub) — A smooth and glistening tan and brown of charm and distinction. June-July. 36 in. **Each \$1.00**

GYPSY (Betscher)—Orange with slight red shading blended beautifully together giving it appearance of smoky orange, about 5 inches spread. 3½ ft. tall. Stems and foliage strong, blooms late July. ----- **Each \$0.50**

HANKOW—Introduced by Dr. Stout, The flowers are large, wide-spreading (5½ inches), rich yellowish orange with a bold scarlet eye-zone in the petals, one of the finest Hemerocallis. 3½ to 4 ft. July-August. ----- **Each \$0.50**

HAZEL SAWYER (Wheeler)—M. Re. 36 inch. ev. In the pink class and very lovely in the garden. The lighter margins set off the lavender pink tones of the flower. ----- **Each \$1.50**

***HELEN WHEELER** (Traub) — Long blooming fine pink, with a deeper eye-zone. 3½ ft. June-July. -- **Each \$1.75**

HESPERUS (Sass)—Lovely seven inch blooms, empire and light cadmium yellow giving a delightful Jersey cream effect. Several flowers open at once on tall, well branched stalks four feet tall. Blooms in July and August. ----- **Each \$1.00**

HIAWATHA (Stout) 36"—This is a multifloral type of clear orange tone having many blooms to the scape. Always a good garden subject. ----- **Each \$0.50**

HIGH NOON (Milliken)—A rich Cadmium-yellow 5 in. flower with petals and sepals tipped with trace of orange. Heavy substanted and withstands sun and rain. Remaining open late at night. 3 ft. ----- **Each \$10.00**

HOPE (Parry) — A very dainty, charming two-toned flower, with apricot-rose petals having a lighter mid-rib. Sepals soft yellow. Height 3 ft. Aug-Sept. ----- **Eah \$0.75**

JEAN (McDade)—The brightest, most attractive bicolor, brick-red and yellow. Blooming after most are gone. Outstanding 38 in. Aug.-Sept. ----- **Each \$1.50**

JEWELL RUSSELL (Russell, 1950) 36 in. M. Ev.—This huge 7 to 8-inch bloom is the palest of pale lemons. Its extremely wide petals are slightly ruffled and recurved. The sepals of the same color are extremely recurved. ---- **Each \$3.00**

JOANNA HUTCHINS (Kraus)—Smooth, Waxy, glistening pure orange of good substance. Mid-July to late Aug. ----- **Each \$3.00**

J. T. RUSSELL—Ht. 3 ft. Petals yellow with red eye markings. Sepals lemon. Large long bloomer. July-Aug. **Ea. \$1.00**

JUDGE ORR (Orr)—E. 30 inch. The outstanding soft orange-yellow blooming at Iris time. It is as far advanced over the old time, early blooming Daylilies as the modern Daylilies are over the old Flava. Prolific and free flowering; wonderful too as a cut flower. ----- **Each \$1.00**

JULY APRICOT (Bechtold)—A lovely, evenly toned flower of lustrous apricot. Petals ruffled and sepals recurved. Very floriferous and prolific. July-Aug. 30 in. ----- **Each \$2.00**

J. S. GAYNOR (Yeld) ML. 38"—Light golden-yellow of good texture and substance on excellent branching plants. ----- **Each. \$1.00**

JUST MARY (Russell) — 36 in. Red veins running through a yellow background with a deeper eye-zone. Keeps well evenings, heavy bloomer. **Ea. \$1.00**

KANSAN (H. M. Hill 1948)—Huge wide spreading red toned self with long slender, gently recurring segments that taper gradually. Buds are often 6 inches long and the spreading flower 9 inches. One customer wrote of a bloom that measured 11½ inches, 50 inch. **Ea. \$5.00**

KILLARNEY LASS (Nesmith)— L. 34 inch. Unquestionably the finest descendant of Fulva Roea, it inherits from this breeding the pointed petals and star-like shaped blossoms. In color it is a bright pink and probably has less buff or yellow in it than any other variety we list. Very pretty and gives a pink effect in the garden... **Each \$3.00**

KIM (Schreiner) ML. 38"—Our selection as the brownest daylily. It has a gold dust sheen that reminds one of gleaming plumage of a rare bird. Browner than any other variety. ----- **Each \$3.00**

KINDLY LIGHT (Bechtold 1952)—An immense spider type bloom with twisted petals that are beautifully ruffled. A flower of glowing yellow with a citron accent. 30 in. July. ----- **Each \$5.00**

KNIGHTHOOD (Schroeder) ML. 38"—This impressive, rich maroon red with its even tones and rich coloring has impressed everyone. One of the very finest new daylilies, smooth and finished. ----- **Each \$3.00**

LADY BOUNTIFUL (Lester) — A very large early blooming soft yellow. Edges of petals tinged faint pink on cool days. 40 in. ----- **Each \$3.00**

LADY FAIR (Nesmith)—M. 38 inch.—This was the queen of the pinks as we bloomed them last year. A flesh pink with a creamy understone, we have enjoyed flowering this variety for several seasons and have never been disappointed in its delicate beauty. -- **Each \$4.00**

LEST YOU FORGET (Russell 1945)—Neat brilliant red, a glowing color gem, 42-inch, de. ----- **Each \$2.00**

LOCHINVAR (Taylor)—A large, widely opened flower with broad, shallow throat of carmium-yellow. Petals and speals ember-red with lighter eye-zone. July. 34 in. ----- **Each \$3.00**

LONE STAR (Russell) — Large fiery brick-red. Reminds one of a red edition of Painted Lady. July-Aug. 38. **Ea. \$2.00**



MABLE FULLER

MABLE FULLER (Krasu)—Large, wide sparkling ruby-red. Reminds one of a Red Speciosum in shape. Still in bloom in our garden at 1:30 a. m. July-Aug. 30 in. ----- **Each \$3.00**

MAJESTIC (Stout) — Very large, clear orange flower of heavy texture. Beautiful. ----- **Each \$1.00**

MAMIE LAKE (Russell)—Huge 7 to 9 in flower. Ruffled rich rosy orchid petals with darker eye zone. Lemon yellow speals. Spidery recurved type. A gorgeous, unusual, long bloomer. Hgt. 4 ft. ----- **Each \$2.00**

***MANCHU** (Stout)—Apricot orange with a greenish throat. This bloom has a narrow arching prominent eyezone. 3 Ft. June-July. ----- **Each \$1.50**

MANITOU (Kraus)—A large lovely rosy-bronze with a tendency to doubleness. A vigorous grower and very floriferous. July-Aug. 32 in. ----- **Each \$2.00**

MARCUS (Perry 1932)—Large, crinkled flower of apricot, dusted over with soft bronze. June-July. 3½ ft. **Each \$0.50**

MARGARET PALMER (Russell) — A lovely rounded bloom with wide overlapping petals of soft red. Sepals yellow, overcast red with cardinal red eye zone. Yellow throat. 30 in. May-June. ----- **Each \$0.75**

MARY GUENTHER (Russell)—Brilliant carmine and rich yellow bicolor. June-July. 3 ft. ----- **Each \$0.50**

MARY STOKER (Perry 1932)—Brown, red and canary yellow, large and wide, very fine, July-Aug., 36 inch, de. ----- **Each \$0.50**

MAYOR STARZYNSKI (Traub) — A very beautiful glistening bronze rose, about a medium size bloom. 4 ft. June-July. ----- **Each \$0.75**

MELISIO (Russell)—A lovely rounded 5 in. flower with wide, ruffled petals of old rose, recurved sepals of canary-yellow, with edges of old rose. Light green throat. Keeps well late into night. 2½ ft. June. ----- **Each \$1.50**

MERRY MOOD (Nesmith) — A cheery pink that is most effective in the garden. According to Ridgeway the petals are a little deeper than Rose Dore with a cream midrib. Sepals have a lighter background flushed with a deeper color. June-July. 3½ ft. ----- **Each \$2.00**

MIDWEST MAJESTY (Sass 1947)—Wonderful new yellow self, perfect form and heavy substance, very large, 50-inch, de. ----- **Each \$5.00**

MIDWEST STAR (Sass) ML. 38"—A large star shaped bloom of clear bright yellow. Good substance. ----- **Each \$5.00**

MING TOY (Wheeler 1949) — Dainty semi-dwarf bicolor in magenta and orange. ----- **Each \$3.00**

MINNIE (Hayward)—A rich mahogany with a glint of crimson. An orange throat lights the center of the flower giving it commanding attention. Hgt. 3 ft. Blooms June-July. ----- **Each \$0.75**

MISS HOUSTON (Russell)—A real pink, both petals and sepals, with a slightly deeper eye zone and a yellow throat. This is a tall Hemerocallis with flowers 4½ inches across, and when planted with various colors is simply breathtaking. Opens full. Height 4½ feet. June. ----- **Each \$4.00**

MISSION BELLS (Hall) — Large wide petaled, ruffled flower of clear medium yellow producing up to 52 flowers to stalk on established plants. A fine variety that is a strong grower and a free bloomer. July-August. 3 ft. **Each \$2.00**

MONONA (Kraus) 20 in.—A large, glistening, free blooming, waxy orange. July-Aug. ----- **Each \$3.00**

MOONRAY (Nesmith 1940)—Clear yellow with a dainty halo of red in the throat, July-Aug. 30-in., de. **Each \$0.50**

MORNING GLORY (Russ)—A lovely rose pink bloom of medium size on 34 in. stems. July-Aug. ----- **Each \$0.75**

MOROCCO RED (Nesmith)—M. 38 inch. A velvety Morocco-red with the color evenly placed on both petals and sepals extending practically to the heart of the flower. A rich shade; the plant habit is exceptional. It is one of the finest growing red Daylilies. ----- **Each \$1.00**

MRS. A. H. AUSTIN (Betscher)—3 ft. July. Especially fine, thick textured deep golden-yellow. ----- **Each \$0.50**

MRS. B. F. BONNER (Russell)—2½ ft. June-July. The color of hyperion but claimed to be larger and finer. **Ea. \$0.75**

MRS. CHAS. WALGREN (Dr. Kraus)—One of the loveliest daylilies of charm—salmon rose that will be in large demand when better known. Blooms in early July. ----- **Each \$4.00**

MRS. HUGH JOHNSON (Russell 1942) —Fiery red with satin sheen, wide petals and sepals, small yellow throat, June-July, 42-inch, ev. ----- **Each \$1.00**

MRS. JOHN J. TIGERT (Watkins)—A very bright red with a lovely yellow throat. A very good garden subject. Prolific and sprightly, very hardy and one of the best in this class. Hgt. 36 in. Blooms June. ----- **Each \$0.75**

MT. VERNON — Dormant. This full, wide flower is lemon, deeply overcast coral-rose. It multiplies fast, blooms profusely and is an excellent keeper as a cut flower. If you want something really different in Daylilies, here it is. 5 inch bloom. Hgt. 2½ ft. April to June. ----- **Each \$0.75**

MYOWNE (Vestal)—34 in. This is a rich bi-color of orange-bronze speals and rich red petal. This daylily blooms almost through the full season. **Each \$3.00**

NARANJA (Wheeler 1947) — Clear deep orange self, large and well formed ruffled and brilliant, 36 inch. **Each \$5.00**

NIGHTFLIGHT (Kraus)—A very graceful 5¼ in. flower of oxblood-red with a tangerine-orange base. Heavy texture and non-fading. 32 in. July-Aug. ----- **Each \$5.00**

OLD VINTAGE (Russell 1942) — Tall wine color with yellow throat, 36 inch, ev. ----- **Each \$0.75**

ONEITA (Davis)—Large rose-red, exceptionally fine form and substance. Blooms over a long period of time. 30 inches. ----- **Each \$3.00**

ON TOUR (Russell) — A giant bloom, fully 6 inches across, of the palest yellow. The petals are wide and the sepals slightly twisted in a form found in no other daylily. 3½ ft. June.----- **Each \$1.00**

PAINTED LADY (Russell 1942)—Large wide open flowers, flushed with cinnamon over yellow, wide ruffled petals, heavy substance, and indescribably beautiful blend, 36 in. de. -- **Each \$2.50**

PAI PEI (Russell) — 30 inch. A four inch flower of rosy pink, its petals are rose with a deeper rose red eye-zone. ----- **Each \$2.00**

PALIMINO (Russell)—30 inch. Creamy buff with a trace of pinkish rose. ----- **Each \$1.00**

PAMELA (Kraus)—Excellent, wide flaring, waxy, broad petaled, buttercup-yellow. July to late Aug. -- **Each \$3.00**

PARRADO (Russell)—3 ft. July-Aug. 4½ blooms of palest shell salmon with deeper salmon eye zone. Golden yellow throat. ----- **Each \$1.25**

PARTY GOWN (Milliken)—A 6 in. flower with wide petals and sepals of lemon yellow, the edges of these washed with Indian-red. 3½ ft. July. -- **Each \$2.50**

PERSONAL APPEARANCE (Russell)—2 ft. A very late, very profuse bloomer, 5 inch ruffled flowers of pale yellow with sepals of golden yellow. **Each \$1.00**

PETER PUMPKIN (Nesmith 1946)—Full cup shaped flowers of pure deep orange, overlapping petals, well branched. ----- **Each \$2.00**

PETRA (Nesmith)—Broad petals of rich ruby-maroon with expansive golden sepal for contrast. Very striking. July-Aug. 34 in. ----- **Each \$2.50**

PIED PIPER (Taylor) — Sprightly bicolor in red and yellow. Petals crimped. Sepals plain and recurved. 24 in. June. ----- **Each \$2.00**

PINK CHARM (Nesmith 1940) — Soft ochre-red giving a garden effect of deep coral pink, late, 38 inch. -- **Each \$1.00**

PINK DELIGHT (G. Douglas)—A medium open cupped flower of light rose pink with a greenish yellow throat. 36 in. July-Aug. Late 1952 introduction. ----- **Each \$15.00**

PORCELAIN PINK (Nesmith 1945) — Luminous and very smoothly finished pink with light peach background gaily marked with deeper pink. 5 in. dia. Medium wide petals. June-July 3 ft. ----- **Each \$3.00**

PORT (Stout)—A full flower of rich sprightly red, with sturdy, much branched stalks bearing many flowers. Slightly darker in mid-zone; greenish throat. Open evenings, 2½ ft. July and August. ----- **Each \$0.75**

POTENTATE (Nesmith 1943)—Luminous purple, smooth and satiny, the color extending deep into the throat and including stamens and pistil. Outstanding. July. 3½ ft. ----- **Each \$5.00**

PRAIRIE BOY (Sass)—Large, full, zinc-orange flowers. A very rich color. 38 in. July. ----- **Each \$2.00**

PRAIRIE GOLD (Russell)—2 ft. A semi-dwarf with 4 inch blooms of beautiful canary-yellow. Blooms in August and continues for some time. -- **Each \$1.00**

PRIMULA (Kraus)—Large, early, wide petaled yellow. Opens full even on dull days. Late June through July. ----- **Each \$3.00**

PRINCESS (Stout)—Fragrant lemon yellow, a distinctive light shade. **Each \$0.50**

PURPLE HAZE—Ruffled petals. Light wine color with very dark veining. Yellow throat shading to green. Midrib almost white through each petal. Hgt. 2 ft. July-Aug. ----- **Each \$1.00**

PURPLE WATERS (Russell 1942) — Strong wine purple, full open flowers, long season of blooms, 36 inch, de.. ----- **Each \$1.00**

QUEEN ESTHER (Sass)—A very brilliant crimson, medium size, very compact form. Hgt. 36 in. July. **Each \$2.00**

REDWOOD (H. M. Hill 1948)—A fine shade of clear red with bright yellow in the throat. The flower heads are well-branched on tall strong stems. ----- **Each \$1.00**

REVOLUTE (Sass)—This has been called an improved Hesperus, but it has an individuality that is quite different, a shade lighter in color tone with a more ruffled outline. ----- **Each \$1.50**

RINGLETS (Kraus) 1950—24 to 30 inches. Mid-season. Small creped and curled bright gold. Extremely free flowering. Excellent for arrangements. ----- **Each \$5.00**

ROSALIND—This is one of the most interesting species, the parent and source of our pink and rose color. Rosalind is most distinctive, a bright rose-red shade with a silvery sheen. Very pretty. ----- **Each \$1.50**

ROSARIO (Kraus)—A large flower of clear true pink with orange-yellow base. Non-fading, holding color throughout day. Very luminous in the sun. 38 in. July-August. ----- **Each \$10.00**

Special Red Collection

**QUEEN ESTHER
KNIGHTHOOD**

RUBY SUPREME

Catalogue Value \$7.00. All Three for \$5.50 Postpaid.

QUEEN OF GONZALES (Russell)—Color of flower is chrome yellow or light orange, the petals are broad and overlapping. The six inch blooms remain open over a long period when cut. One of the earliest of the large varieties to bloom on stalks 3 feet tall. **Each \$1.00**

QUEEN OF TEXAS (Russell)—A lovely rosy red. Quite different from other reds and roses. 3 ft. June-July. **Ea. \$0.75**

RED ADMIRAL (Russell)—A showy and fiery orange red, with small blooms. Good increaser. 2½ ft. July. **Each \$0.50**

RED BIRD (Stout 1941)—A most brilliant vermilion red with a deeper mid-zone, 36 inch, ev. ----- **Each \$2.00**

RED CINDERELLA—Dormant. A brilliant Chinese red, with a satiny sheen and an orange throat. The petals of the 4½ inch flower are wide and ruffled and slightly recurve. Hgt. 2½ ft. May-June. ----- **Each \$1.50**

RED PERFECTION (Russell)—36 inch. An orange red with petals slightly ruffled. ----- **Eah \$1.00**

ROSE BEAUTY (Russ) — A deep rose flower with sulphur yellow throat. Petals and sepals, slightly ruffled. 3½ ft. June-July ----- **Each \$1.00**

ROSE GEM (Stout)—36 in. This is an all over rose color with a greenish-yellow throat, the flower having a 6 in. spread. ----- **Each \$2.50**

ROSE OF TEXAS—Dormant. Rosy-red, almost fiery red but lighter. Highly favored in my field and a very fast grower, 4 inch bloom. Hgt. 3 ft. April-May-June. ----- **Each \$1.00**

ROYALTY (Nesmith 1940) — Large velvety maroon with a blackish sheen, yellow cup in center, midseason, 40-inch. ----- **Each \$1.50**

ROYAL ENSIGN (Stout)—Full, large, recurving flowers with a golden throat that extends up the center of the rich maroon petals producing a striking red and gold appearance. 3 ft. July-August. ----- **Each \$3.00**

ROYAL RUBY (Nesmith, 1942) — A marvelous flower of almost crimson red with glow and life throughout. It has the most intense red color that I have seen in a Hemerocallis. A smoothly finished flower with a full semi-reflexed petals and sepals a self with almost no yellow in the cup. The stalks are medium height with good branching. July, August. 38 inches. (Introducer's description.) ----- **Each \$4.00**

RUBY SUPREME (Wheeler 1940)—Luminous ruby-red with broad full petals, sweepstakes winner at the National show, 42-inch, ev. ----- **Each \$2.00**

RUFFLED PINAFORE (Milliken) — Warm apricot-yellow, with broad overlapping petals and sepals. Petals are crimped and ruffled. Green throat with outer edges pale rose. 2½ ft. June-July. ----- **Each \$10.00**

RUSSELL'S BLACK SWAN (Russell)—24 inch. This daylily has purple petals and slightly lighter sepals. -- **Each \$1.00**

SACHEM (Stout)—4 ft. June-July. An early rich deep red, near carmine, 5 inch flowers with greenish-orange throat. ----- **Each \$0.75**

- SAMMY RUSSELL** — Dormant. This lovely dainty little 2½ inch flower is really a red multiflora and a clump in full bloom is a sight to behold. This is the best late blooming dark red, an extremely fast grower. Ht. 2½ ft. August-September. ----- **7ach \$1.00**
- SCARLET LETTER** (Hill 1952)—A new large light red that has proven to be universally popular with our garden visitors. It is a bright light shade that is perhaps best described as tomato red! The flowers are unusually large and wide for a red, 36 to 40 inches in height and with fine strong stems, blooms in June and July and has a long season of bloom, heavy substance. ----- **Each \$10.00**
- SCARLET SUNSET** (Wheeler 1947) — Rated by many as the most brilliant of all reds, striking color gem, medium size 30 inch, ev. ----- **Each \$4.00**
- SEMINOLE CHIEF**— (Lester — Blooms of fine form and of good size. A cherry red that is very attractive. 32 inches. July. ----- **Each \$1.00**
- SKYLARK** (Russell)—4 ft. May-June. Lemon with a faint green throat, very good substance. ----- **Each \$1.00**
- SOUDAN** (Stout)—Hgt. 3 ft. Very tall crinkled empire yellow. Fragrant, long profuse bloomer. ----- **Each \$0.75**
- SPANISH MAIN** (Russell)—32 inches. This pink looks like Mrs. Houston, except a little deeper in color with a rose-pink eye-zone. ----- **Each \$1.00**
- SPIDER RED** (Bechtold)—Large open star-shaped flower of burnt-orange and red with a center of fiery orange. Very good. 44 in. July. ----- **Each \$5.00**
- SPRING PARADE**—Dormant. The 4½ inch bloom has intensely ruffled petals of true raspberry color with a deeper eye zone and deep veins running through each wide twisted petal; huge apple-green throat and rosy brown sepals. Hgt. 2 ft. April-May. ---- **Each \$1.00**
- STALWART** (Cook) — Large flower of tawny reddish bronze and orange with a gold throat. The petals are recurved with a golden midrib. July-August. 3 ft. ----- **Each \$0.75**
- STAR OF GOLD** (H. Sass)—Huge, magnificent blooms of light yellow on tall branched stems. Star-like flowers. 4 feet. August. Rebloomer. -- **Each \$0.50**
- SUMMER LOVE** (Milliken 1952) — A very large deep yellow with extremely wide petals and sepals that curl very slightly at the ends. The whole flower opens flat with an orchid like flower. Unusually fragrant and remains open at night. 36 in. ----- **Each \$15.00**
- SUSAN** (Russell) — 3½ ft. June-July. Six inch flowers of brilliant red with canary stripe in center of each. Sepals are yellow with rosy edge. Green throat. ----- **Each \$0.75**
- SWEETBRIAR** (Nesmith) — A large flower of dull rose blended apricot, wide open form showing a soft yellow throat. Plant is vigorous and prolific. Mid-season. 40 inch. ----- **Each \$1.25**
- TANGERINE** (Yeld) — True tangerine colored flowers in late spring, buds tinted red, semi-dwarf, twenty inches tall, in bloom May and June. ---- **Each \$0.75**
- TARUGA** (Stout)—Clear lemon-yellow with a faint cinnamon dust effect in the midzone area. Flowers are large, 6 inches or more in diameter, petals have graceful curlings and foldings. The wide open flowers of Wau-bun type are abundantly produced on 3 ft. stalks. Midseason. 36 inch. ----- **Each \$1.50**
- TAJ MAJAL** (Russell) — 2 ft. Very early. Rich chrome color with a velvety sheen and a wide eye zone of rich purple-red. Five inch flower. Fast multiplier. ----- **Each \$0.50**
- TEJAS** (Russell)—3 ft. June. An intense fiery red with yellow throat. ----- **Each \$0.75**
- THE DIRECTOR** (Russell)—30 in. A huge flower of rich wine-red and petals that are overlapping and ruffled like crepe paper, the sepals are a shade lighter and the throat is chromed color. This is a 5 in. bloom. ----- **Each \$2.00**
- THERON** (Stout)—3 ft. June. Deep red with curved and twisted petals. Pale yellow-orange throat, shaded green at the base. ----- **Each \$0.75**
- VEGA** (Wheeler 1948) — Semi-dwarf deep wine purple with bright canary throat. ----- **Each \$1.50**
- VESTA** (Stout) — 2½ ft. May-June. Deep orange with slight fulvous markings in mid zone. ----- **Each \$0.50**
- WAR PATH** (Russell 1942) — Even dark mahogany red of fine quality. June-July, 36 inch, de. ----- **Each \$1.00**

WAUBUN (Stout) — 3 ft. July-August. Uniform cadmium yellow, outer half overcast delicate fulvous-red. Petals large and broad. ----- Each \$0.75

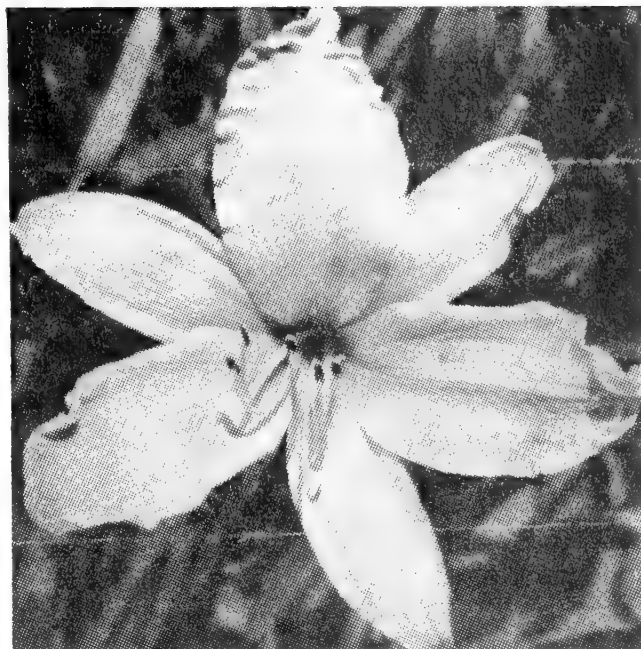
WILAMENA (Russ) — A much larger flowered and taller **ATHONE**. Same color pattern. ----- Each \$3.00

WINDSOR TAN (Nesmith)—Soft golden-brown petals, speals of yellow, lightly flushed warm sepia. 3 ft. July. Ea. \$3.00

WOODLOT GOLD (Cleveland 1934) — Large crinkled light yellow which blooms profusely. June-July. 3 ft. ----- Each \$0.50

YELDRIN (Stout) 30 in.—This is a yellow-orange tone, a multiflora type that gives you many blooms to the scape, this daylily is fragrant. ---- Each \$1.00

YELLOWSTONE (New) (Dr. Kraus) — A creped and crinkled fragrant yellow. ----- Each \$3.00



YELLOWSTONE

ZOUAVE (Stout) — 34 inches. Red bi-color speals are lighter and this daylily blooms very early again in the fall.

----- Each \$1.00

All in this group are **75c** Hemerocallis, you may choose five different for **\$2.75** or ten different for **\$5.00** Postpaid.

BLACK EMPEROR
CHARIOTEER
COMET
EW YANDRE
FLAMING SWORD

GEO. KELSO
MARGARET PALMER
MINNIE
MT. VERNON
PORT
RED ADMIRAL

SOUDAN
STALWART
TANGERINE
TEJAS
THERON

All in this group are **\$1.00** Hemerocallis, you may choose five different for **\$3.75** Postpaid or ten different for **\$7.00** Postpaid.

ANNIS V. RUSSELL
AUG. ORANGE
BLACK HILLS
BRUNETTE
CABALLERO

CRAEMORE RUBY
DUCHESS OF WINDSOR
DR. STOUT
GOLIATH
HESPERUS
J. T. RUSSELL

PALIMINO
RED PERFECTION
SKY LARK
SPRING PARADE
WARPATH

HEMEROCALLIS—Make up your own collection from the following group. All in this group are **.50c** Hemerocallis, you may choose 8 different varieties for **\$3.00** Postpaid.

AUGUST PIONEER (Stout)—3 ft. Aug. Sept. Chrome-orange with red flush on petals. Medium sized flowers in profusion.

BAGDAD—Brown and reddish tones with yellow throat, open flowers with a yellow midrib center of petals. 3 ft. June-July.

- BOUTONNIERE** (Stout 1939) — Small brilliant orange and pink, wiry branched stems bear a profusion of miniature flowers, July, 36-inch, de.
- CALYPSO** (Burbank 1918)—Light lemon-yellow night bloomer. Large and pleasantly fragrant. July 3½ ft.
- CINDERELLA**—Petals red-copper, sepals lemon-yellow. 2½ ft. July.
- CRESSIDA** (Betscher) — 3½ ft. May-June. Early flowering tall, bright, saffron-yellow.
- DEMON** (Russell)—4 in. blooms of brilliant orange and mahogany. Has a magnetic appeal. 2½ ft. June-July.
- DUMORTIERI**—A rich cadmium-yellow. 2 ft. May-June.
- DOVER** (Bretscher)—Broad-petalled orange-cadmium. Fine orange-toned early mid-season variety. June-July. 3 ft.
- EVANGELINE** (Russell) — 3 ft. May. Petals are rosy red with deep wine eye zone. Sepals are lighter in color. Flowers are 5 to 6 inches across.
- GEORGE YELD** (Perry)—Large flowers of bronzy apricot flushed with brownish red. Midseason. 36 in.
- HYPERION** (Mead 1925) — Very large soft canary yellow, fine form and fragrance, long considered one of the best. July-Aug. 42 inch, de.
- J. A. CRAWFORD** (Betscher 1929) — Large, brilliant apricot yellow, slightly fluted and crimped. Excellent substance. Tall and vigorous. June-July. 4 ft.
- JOY RUSSELL** (Russell)—5 ft. June. Tallest of the Pale lemon-yellows with 5-inch blooms of excellent texture.
- LIGHTS OF PARIS** (Russell)—36 inch. True yellow tips, brilliant red, keeps well.
- LINDA**—Hgt. 2½ ft. Pastel bicolor. Large open type golden, pinkish salmon, cream effect.
- MARGARET** (Cook 1943) — Distinctive large buff-yellow, smooth and refined, midseason. 36 inch, de.
- MARY GUENTHER** (Russ) —A large, outstanding bi-color of carmine-red and yellow. 2 ft. July.
- MIDDENPORFII**—Fragrant rich orange-yellow. 2 ft. June.
- MIKADO**—Large rich orange with deep mahogany throat. 3 ft. June-July.
- MINOR** (Species)—An ideal plant for edging. Very early with grass like foliage and pure yellow flowers about 15 inches high.
- MODESTY** (Betscher)—Creamy yellow self color, raised midrib. Long season of bloom, early June into July. 3 ft.
- MOON BEAM** (Sass)—The ideal plant for patios as this one is a night bloomer. A large, creamy yellow on 5 ft. stems. July-Aug.
- OPHIR** (Farr 1942) — Large trumpet shaped golden yellow of fine form and quality, midseason, 36 inch, de.
- OUR PET** (Russell)—2 ft. April-June. Tiny 3½ inch blooms of rich deep yellow. Overcast with orange-red. Fiery red eye zone. Very profuse bloomer.
- PATRICIA** (Stout)—3 ft. July. Lovely pale lemon-yellow with greenish throat. Cool, fresh looking, weather resistant, waxy 5 inch flowers. Very fragrant.
- RUSSELL'S MINUET** (Russell) — 2 ft. 4½ inch dwarf with wide overlapping petals of rich rose with wide yellow stripe down center of each. Sepals canary yellow.
- SERENADE** (Stout 1935) — Crinkled pale yellow with a pinkish flush, June-July, 48 inch, de.
- SIR MICHAEL FOSTER**—3½ ft. June-July. Large apricot yellow with broad ruffled petals. Very vigorous.
- SOVEREIGN** — Soft chrome - yellow, shaded brown on outer petals. 2 ft. May-June.
- SPITFIRE** (Russ)—Fiery-red with yellow midrib and yellow throat. Very floriferous and prolific. 2½ ft. June.
- SUNNY WEST** — A Sass origination. Very large flower of waxy canary yellow. Tall stems with many buds. Tall and late. July-August. 4 ft.
- THUNBERGIA**—A rich buttercup-yellow. 2 ft. June-July.

The following varieties may be seen in our display beds but not for sale at the present as stocks are too low.

ALLADIN	EMILY BROWN	NEYRON ROSE
APRICOT QUEEN	ELIZABETH	NORTH STAR
ARLINE	EURADICE	ORANGE BEAUTY
AUGUSTA	FERN IRVING	PEACH BLUSH
AUT. DAFFODIL	FRANCIS RUSSELL	PEACH TREE BEAUTY
BAGGETTE	FRED STUNTZ	PIED PIPER
BADANNA	FULVA ROSEA	PINK BOWKNOT
BELLE OF GEORGIA	GARDEN CHARM	PRIMA DONA
BERNICE RUSSELL	GUEST STAR	PURPLE EMPEROR
BETSY B.	HONEY REDHEAD	RED HUSSAR
BERTRAND FARR	INVITATION	RHODORA
BONJOUR	ISLE DE FRANCE	ROYAL BEAUTY
BRAVO	JUNE ALCOTT	SCEPTRE
BROCADE	LENA BROCK HOOVER	SOLEDAD
BYNG OF VYMY	LIBBY FINCH	STAR OVER DALLAS
CANARI	LITTLE IMP	STRAWBERRY ROAN
CANYON PURPLE	LUSTROUS	SUNNY MORN
CAPRI	MADRIGAL	SUNSET SKY
CATHEDRAL TOWERS	MAID MARION	SYMPHONY
CHARMAINE	MARGARET FULLER	TIGER EYE
CLASSIC	MARIONETTE	VALIANT
CLOVE PINK	MEADOW GOLD	VICEROY
COCKADE	MIGNON	VILLANELLA
CRADLE SONG	MING	VIVIAN TOOLE
DRAGONETTE	MRS. DAVID HALL	VOGUE
ELEGY	MIKAWA	WINCHESTER
		YELLOW GOWN

A SELECTED LIST OF TALL BEARDED IRIS

CULTURE

Tall Bearded Iris will give excellent results in any fertile soil with reasonable drainage and exposure to sunlight. Whether the soil is neutral, slightly acid or calcareous makes little or no difference. Plants should be set out so that the rootstock (rhizome) is barely underground. If soil is dry when planting is done a thorough soaking is beneficial but after the plants become established they require very little moisture after blooming. When the plants become too crowded or decrease in their flowering, division is likely necessary. Bearded iris will grow but not bloom properly in a shaded location.

(Shipment of Iris starts July 1)

Name of variety is followed by the name of the originator and the year of introduction. Season of bloom is indicated by the initials E-M-L signifying early, mid-season, or late. Height is given in inches.

ACTION FRONT (P. Cook '42)—M 36 in. Big, bright, bold, copper-red. -----\$0.75

ALLADDIN'S WISH (Murawska '45)—M 36 in. Medium blue with brushings of cream. A large, tall and very distinct plicata. ----- \$0.75

ALASTOR (Spender 1940) — E.M. 36". Bright, deep pink with gold center. Eng. Silver Medal 1937. ----- \$0.60

AMANDINE (Douglas 1946)—E.M. 36 in. (White Prince x Caroline Burr). A top notch iris of rich cream with a faint flush of lemon. A.M. 1948 ----- \$2.00

ANGELUS (Egelberg '37) — L 36 in. Creamy lavender-pink. A distinct and beautiful color in a large, broad-petaled flower of heavy substance. -----\$0.50

ARAB CHEIF (Whiting '44)—VL 38 in. Flash, rich henna-tan. Gorgeous. \$1.00

ARCADIA BUTTERCUP (Milliken) — So clear and bright is the deep yellow that it glistens and shines even on the dullest days. The color is uniform throughout. Faring form, excellent substance and branching. 30 in. Early. \$1.50

ARGUS PHEASANT (DeForest 1948) — M. 38 in. (Casa Morena x Tobacco Road). A bright and very smooth light golden brown with broad petals and flaring form. Dykes Medal 1953. ----- \$5.00

- AZURE SKIES** (Pattison '43)—M 36 in. Airily ruffled pale lavender-blue with firm, domed standards and widely flaring falls. Substance and branching good. ----- **\$0.60**
- BERKLEY GOLD** (Salbach '42) — ML 36 in. Very rich deep yellow and one of the top notchers in this color. Good size and form. Heavy substance. **\$0.50**
- BLUE RHYTHM** (Whiting '45)—ML 38". A cornflower blue of great purity. About the bluest of all in this shade. Wide domed standards and semi-flaring falls with broad shafts and exceptional substance. ----- **\$1.00**
- BLUE SHIMMER** (J. Sass '42)—M 38 in. The best of the white and blue plicatas. Large crisp, white ground flowers, peppered in a purer shade of blue than any other blue-marked plicata. Peppered rather than button hole stitched. **\$1.00**
- BLUE ZENITH** (Whiting '42)—M 40 in. Lightly ruffled, deep sky-blue, large, hard, vigorous and outstanding. -- **\$0.50**
- BRASS BAND** (Whiting)—M 38 in. Orange-yellow with deeper falls. Brilliant flashing and bold like the flourish of a trumpet. Strong stalks on lovely plants. Each. ----- **\$0.75**
- BROWN THRASHER** (Kirkland '41) — M 34 in. A brilliant two-toned brown glistening with metallic iridescence. True brown shade found in no other Iris. ----- **\$1.00**
- BRYCE CANYON** (Kleinsorge '44)—M 36 in. Distinct, warm shade of henna-copper. ----- **\$1.00**
- BUECHLEY GIANT** (Buechley '39) — M 48 in. A very large medium blue. ----- **\$0.50**
- BUFFAWN** (Andrews 1940)—M 34 in. Soft pinkish buff set off with brilliant tangerine beard. A color gem. -- **\$0.50**
- CALCUTTA** (Klein '38)—M 42 in. An unusual cocoanut-brown. ----- **\$0.50**
- CALIFORNIA GOLD** (Mitchell '33) — Intense, somewhat metallic yellow, large and free-blooming. One of the best in its price class. ----- **\$0.50**
- CALIFORNIA PEACH** (Salbach '41)—EM 38 in. Blend of peach, pink and apricot, enlivened by a hint of blue in center of falls. ----- **\$0.50**
- CARRABELA** (DeForest 1949) — This lovely tall clear self of medium toned salmon-pink, with a self colored beard, has beautiful branching and produces lots of gorgeous blooms. It does not fade. Blooms mid-season on tall 40 in. stalks. Honorable Mention A.I.S. 1949. ----- **\$2.00**
- CAROLINE BURR** (Smith '40)—ML 40 in. Large flowered frosty ivory overlaid with pastel chartreuse. Semi-flaring and vigorous. ----- **\$0.75**
- CASA MORENA** (DeForest '43)—M 34 in. Extra large, glistening henna-brown self. ----- **\$1.50**
- CASCADE SPLENDOR** (Kleinsorge '45) —Colorful blend of pink, apricot and tan, heavy substance, tall. ----- **\$2.00**
- CHANTILLY** (Hall '45)—M 36 in. Lovely orchid-pink with edges of both standards and falls so heavily crimped as to appear edged with lace. ----- **\$1.00**
- CHERIE** (D. Hall 1947)—One of the "flamingo" pinks. Its delicate shade of real pink contrasted with a deep tangerine beard is most entrancing. The ruffled blooms are of good size, form and substance and all in proportion. A vigorous grower. Mid-season. 34 in. Award of Merit A.I.S. 1949. Awarded the Dykes Medal A.I.S. 1951. ----- **\$5.00**
- CHINA MAID** (Milliken '36)—M 40 in. An immense flower of good form and substance in blends of deep pink, golden-bronze and soft lilac. Prolific. **\$0.75**
- CHIVALRY** (J. Wills 1944)—A Dykes Medal winner for 1947. Its blooms are medium blue with ruffled edges, having domed standards that are large and full. The gracefully flaring falls are broad at the haft, and are of excellent texture. A blue tipped orange beard gives a finish. Mid-season. 36 in. ----- **\$1.50**
- CRISTABEL** (Lapham '36) — M 36 in. Large flowers of excellent coppery-red. **\$0.50**
- CITY OF LINCOLN** (H. Sass '37) — L 40 in. Acknowledged king of the variegatas. Rich golden-yellow standards. Bright, velvety-red falls. ----- **\$0.50**
- CLARIBEL** (J. Sass '36)—Large flowered white plicata with blue stitching. ----- **\$0.50**
- CLOUD CASTLE** (Graves '44)—M 37 in. A broad petaled, heavily ruffled, pale wisteria blue of large size and flaring form. Superb. H. M., 1944. ---- **\$1.00**

- COLOR CARNIVAL** (DeForest 1949)—An ovation in the deep shell pinks. The flower is a deeper pink than Spindrift and has a startling color contrast of bright purplish tones throughout the top portion of the fall petals, surrounding a bright tangerine beard. It is truly a color carnival. Mid-season. Honorable Mention A.I.S. 1950. 36 in. ----- **\$3.50**
- COPPER FRILLS**—M 34 in. Crisply ruffled, rosy copper self—well named. A border iris, rich in color, good for massing. Flowers rather small but well proportioned to the well branched stalk. Nice for cutting. Appreciated more each year. ----- **\$0.50**
- COPPER LUSTRE** (Kirkland '34)—M 36 in. A blend of gold, copper and pinkish-tan that produces the effect of glistening copper. ----- **\$0.50**
- COPPER PINK** (Kellogg '41)—M 38 in. Luscious soft pink blend with coppery suffusion at the hafts, blue shadings on the midrib and style arms and orange-brown beard. Perhaps the pinkest blend. A fine companion to Caroline Burr. **\$0.50**
- CYNTHIA ANN PARKER** (Whiting '47)—EM. 36 in. Clear light blue self with a brilliant yellow beard. ----- **\$0.50**
- DAWN RAYS** (Whiting '48)—M 33 in. A lovely pink and yellow blend. ---- **\$0.50**
- DAYBREAK** (Kleinsorge '41)—M 40 in. Large, ruffled golden-pink with slight copper undertone. Well shaped, closed standard and widely flaring falls. **\$1.00**
- DIXIE BELLE** (Milliken '48)—E (White 1937—10 x Lav. 2270-32). Heavily ruffled white—not from Snow Flurry, although it looks as though it should be. ----- **\$1.50**
- DREAM CASTLE** (Cook 1943)—M 36 in. (Cook Edlg. x Rameses). Deep orchid pink with extremely broad hafts and wide petals. Lovely. A.M. 1948. --**\$1.50**
- E. B. WILLIAMSON** (Williamson '36)—M 36 in. A glowing, silky, coppery-rose. ----- **\$0.50**
- ELLA CALLIS** (H. Sass 1942)—M 36 in. Flashing with scintillating brilliance, this deep yellow brushed orange draws the eye like a beacon. The falls have a sort of overlay of vivid orange-brown. ----- **\$1.00**
- ELMOHR** (Loomis '42)—M 36 in. A giant flower of bishop's purple with a glossy lustrous texture. ----- **\$1.00**
- EL MORROCO** (Becherer's '45)—M 36 in. Beautiful opal-pink with broad rounded petals and heavy leather-like substance. ----- **\$0.75**
- ELSA SASS** (H. Sass '39)—M 36 in. Frilly flowers of lemon-ice. ----- **\$0.50**
- EXTRAVAGANZA** (G. Douglas '44)—VL 36 in. Cream white standards, luminous falls are a blend of copper-red and violet. Best amoena since Wabash. **\$1.50**
- FAIR ELAINE** (Mitchell 1938)—M 40 in. Light yellow standards. Deep yellow fall. Bright orange beard, accentuating the two-toned yellow effect. Generous bloomer and rapid increaser. A "must have" for every garden. je. **\$0.50**
- FIRECRACKER** (D. Hall 1943)—This is a bright red plicata. The flower is yellow, heavily stitched and etched in a glowing dark burgundy red. It charms from afar. Mid-season. 32 in. ---- **\$1.50**
- FLORA ZENOR** (J. Sass '41)—M 40 in. Pink, like the foam on a strawberry soda with rosy lines at the shaft. A conspicuous tangerine beard. ----- **\$0.50**
- FOREST VIOLET** (Milliken)—An enchanting deep violet self, warmed and enriched by a brown infusion throughout, even to the violet beard which is heavily brushed with cinnamon. The flowers are medium sized, the standards are closed, and the falls, which are slightly ruffled, flare in an interesting fashion. Exceptionally valuable for cutting. Very fragrant. 3 ft. ----- **\$2.00**
- FRANK ADAMS** (Lapham '37)—M 45 in. Maize-yellow standards, deep rose falls. ----- **\$0.50**
- FRIEDA MOHR** (Mohr '26)—ML 42 in. Large lilac rose with a gay, semi-flaring form and captivating color that has added charm to gardens for 20 years. **\$0.50**
- FRISCOETTE** (Hill '46)—M 25 in. This little fellow is a miniature San Francisco. A dainty blue plicata used as table iris. ----- **\$0.50**
- GARDEN GLORY** (Whiting '43) — M 34 in. Pure, deep rich bordeaux red with a dark beard. Smooth even color throughout, no haft markings. -- **\$1.50**
- GARDEN MAGIC** (Grinter '36)—L 38 in. Glowing red, rich and vivid. ---- **\$0.75**
- GLORIOLE** (Gage '33)—Huge frosty, pale blue with excellent substance. **\$0.50**

- GOLDBEATER** (Kleinsorge '44)—M 30 in. Large, smoothly colored deep yellow without blending or markings of any kind. A west coast iris of bright beautiful coloring. ----- \$1.00
- GOLDEN EAGLE** (Hall '42)—EM 38 in. Brilliant light yellow with a satiny sheen. Flowers so huge that the stalks have difficulty supporting them, under our growing conditions. j. ----- \$0.75
- GOLDEN FLEECE** (J. Sass '40)—ML 40 in. Gorgeous lemon-toned flower with creamy falls, edged gold. Huge and ruffled. Very impressive. ----- \$0.75
- GOLDEN HIND** (Chadburn '34)—M 32 in. One of the richest butter-up golden yellows grown. Flowers of medium size. ----- \$0.50
- GOLDEN MAJESTY** (Salbach '38) — Deep golden-yellow that does not fade in the sun. Large flower with closed standards and broad falls. ----- \$0.50
- GOLDEN RUSSET** (Hall 1946)—M 38 in. Enormous flowers! This Iris along with Wm. A. Setchell and a few others, are the titans of the Iris World. Surprising size. Imagine a single Iris bloom measuring 7 inches high and 9 inches across. The buds of Golden Russet, most singular in appearance, measure 6 inches and look for all the world like a big cigar. The color is a light golden russet shade. This probably is the largest Iris we grow. HM '47. ----- \$2.00
- GOLDEN SPIKE** (Whiting '40)—EM 36 in. Shining pure dandelion yellow with a thick orange beard. Large oval-shaped flowers with excellent substance. -- \$0.50
- GOLDEN TREASURE** (Schreiner '36)—M 38 in. Shimmering silky cream with an outpouring of golden yellow from the center. ----- \$0.50
- GRACE MOHR** (Johy '35)—M 36 in. Darker, taller and better branched than Wm. Mohr. ----- \$0.75
- GRAND CANYON** (Kleinsorge '42)—M 36 in. Odd deep colored blend of plum, copper and gold. Center brightened by a gold beard and throat. ----- \$0.75
- GREAT LAKES** (Cousins '38)—M 42 in. Crisp and flaring light blue. Bluer than Shining Water. Rugged and hardy. Bold in flower and foliage, stately height and perfect branching. Dykes Medal winner in 1942. ----- \$0.75
- GUDRUN** (K. Dykes '31)—EM 36 in. An immense white with dusted gold throat. ----- \$0.50
- GYPSY** (Klein '44)—ML 40 in. Coppery gold standards and rich red falls. One of the brightest iris in the garden. H. M. 1945. ----- \$0.75
- GYPSY BARON** (Schreiner '42)—EM 40 in. Plicata of white with very heavy markings of dark purple. Unusual. \$0.75
- GYPSY ROSE** (Whiting 1946)—ML. 38 in. A warm tapestry red, tall and stately, with a smooth brushing of copper at the haft and a hint of blue at the tip of the heavy yellow beard. The blooms are extra large and broadly round in form so it ranks as one of the largest Iris. Well branched on strong stems. HM'49. ----- \$1.50
- HAPPY DAYS** (Mitchell '34)—EM 40 in. Giant-flowered smooth light yellow. Tall and finely branched. Used in hybridizing work. ----- \$0.50
- HARRIET THOREAU** (Cook '44)—ML 38 in. Silvery orchid pink of beautiful form and heavy substance. Outstanding. H. M., 1945. ----- \$0.75
- HARVEST MOON** (Whiting '44)—M 34 in. Luscious blend of apricot, buff and orange, one of the brightest spots in the garden. Large flowers with heavy substance. ----- \$0.50
- HELEN McGREGOR** (Graves '43)—ML 34 in. Pale blue of exceptional purity. Large, perfectly formed, flaring and daintily ruffled. ----- \$2.00
- ICY BLUE** (Weed '41)—Pale blue self, the lightest we list, dusted with a frost-ed. Large and flaring. ----- \$0.50
- INNOVATION** (Stevens '37)—M 38 in. Glistening mulberry carmine of huge proportions and perfect form which often bloom itself out here. s. ---- \$1.00
- INSPIRATION** (Stevens '37)—M. 38 in. This sensational, vividly colored Iris is always the focus of attention. One of the richest of all the rose toned Iris, the giant blooms possess an unrivalled lustre. The broadly formed flowers are precisely formed as if carved and the stem is nicely branched. In tone it is light carmine or rose-cerise. ---- \$1.00
- JAKE** (J. Sass '43)—M 36 in. An outstanding, large, glistening white. \$0.75
- JONQUIL** (W. '43)—Midseason to late, 42 in. Very large flowers of soft, clean yellow, distinctly edged with deeper yellow. Tall and high branched, it should be planted behind other irises. Strong plants show fast increase. ----- \$0.75

KATHERINE FAY (Fay '45)—M 36 in. Large pure white with no yellow in the center. Broad wavy petals. Semi-flaring falls. Excellent substance. -- **\$0.75**

LADY MOHR (Salbach '44)—EM 36 in. Oddly colored seedling of Wm. Mohr. Standards are oyster-shell white. Falls are pale greenish-yellow with red violet patch surrounding the beard. ---- **\$1.00**

LADY OF SHALOTT (Schreiner '42)—M 36 in. A lovely plicata of cream white with delicate edge of heather rose. **\$0.75**

LAKE HURON (J. Sass '42)—M 36 in. A very blue in the medium register. A bright blue that is very effective in the garden. Large and vigorous. ---- **\$0.50**

LORD DONGAN (K. Smith '40)—M 35 in. Silken chinese violet standard(s). Velvety pansy-violet falls. The distinctive beauty is due to the pleasing harmony of the two distinct shades of violet. ----- **\$0.75**

LOTHARIO (Schreiner '42)—ML 38 in. An Amigo-like iris featured by large velvety blooms on tall stalks but not equalling the color contrast of the latter. A grand iris nevertheless. -- **\$1.00**

LOUVOIS (Cayeau '36)—M 35 in. Standards, light chocolate. Falls very rich and glossy maroon, edged with light chocolate. ----- **\$0.50**

LULLABY — A large copious orchid-pink. The standards and falls are the same luscious orchid color with no haft markings. A fresh, cool colored Iris. ----- **\$1.00**

LYNN LANGFORD (Hall '46)—AM '50. 36 in. Beautiful orchid pink with smoothly blended golden yellow heart. ----- **\$2.00**

MAGIC CARPET (Schreiner '42)—ML 35 in. The largest plicata we have seen. Rich buff with rose markings. ---- **\$0.75**

MANYUSYA (J. Sass-Hill '44)—M 34 in. A delightfully ruffled and frilled orchid pink flower. ----- **\$0.50**

MARATHON (Whiting '48)—M 36 in. A glowing color in the garden. A rich but smooth blending of apricot, buff and rufus orange. Wide form and heavy substance. ----- **\$1.00**

MASTER CHARLES (Wmsn. '43)—M 38 in. Rich glowing mulberry purple with a wonderful sheen, jaunty flaring form and excellent substance. ----- **\$0.75**

MELANIE (Hill '41)—M 45 in. A lovely orchid-pink of bold size and stature, ideally branched, heavy substantced. ----- **\$0.50**

MELITZA (Nesmith '40) — Impressive and unique is this tall graceful iris of salmony flesh with an intense pinkish tangerine beard, so vivid that the entire flower is infused with this brilliant color. Indispensible as a breeder. Midseason. 40 in. A.M., A.I.S., 1942. ----- **\$0.50**

MELLOWGLOW (Whiting '42)—M 36 in. Deep peach or apricot with flush of pink. Broad petaled and perfectly formed. ----- **\$1.50**

MICHILLINDA (Milliken)—A charming plicata with a shell-pink ground color lightly sprinkled with dark rose dots. A golden beard adds a contrast note. It is an exceptionally good performer, the blossoms are large and ruffled, and either in the garden, or as a cut flower, gives a light airy touch. With browns or blue it is breathtaking. 3 ft. ----- **\$1.00**

MING YELLOW (Glutsbeck '32)—ML 36 in. A large, clear, rich, smooth medium-yellow of even tones. No veining. ----- **\$0.75**

MINNIE COLQUITT (H. Sass '42)—M 36 in. A massive ruffled pure white plicata with broad wine-purple border in sharp contrast. Very beautiful. **\$1.00**

MIRABELLE (Whiting '42)—M 38 in. Delicate creamy-apricot blend with a touch of pink on the falls. Large heavy substantced flowers. ----- **\$0.75**

MISS CALIFORNIA (Salbach '37)—M 48 in. Boldly proportioned lilac-pink of tall stature and vigorous growth. **\$0.50**

MISSOURI (Grinter) — Clear medium blue, long considered one of the greatest of Irises. ----- **\$0.50**

MOONLIGHT MADONNA—36 in. Ruffled pale lemon-ice color, good substance. ----- **\$0.75**

MOONLIT SEA (Sass, 1943)—M. 36 in. Standards white, heavily flushed lavender-violet. Falls white, heavily flushed lavender-violet, darkening to mulberry-purple on lower edge. Exquisite gold center. ----- **\$0.60**

MULBERRY ROSE (Scheiner '41)—M 40 in. Bright purple-rose. A new and luscious color in a big flower. Tall, vigorous and hardy. ----- **\$0.75**

NARANJA (Mitchell '35)—M 36 in. A deep rich yellow with orange cast on falls. ----- **\$0.50**

- NEW SNOW** (Fay '46)—M 38 in. A large sized and nicely formed clean white. Choice. A.M., 1948. ----- **\$2.00**
- NIGHTFALL** (Hall '42)—M. 36 in. A large flower of good form and a rich, velvety finish in deep tones of purple. A. M., 1945. ----- **\$0.50**
- NIGHTINGALE** (Hall '42)—M 38 in. Large, bright golden russet with a coppery pink overton. H.M., 1944. -- **\$0.75**
- NOONDAY SKY** (Weed '40)—E 40 in. A very large lavender-blue with a light maroon veining at the haft. ----- **\$0.50**
- NYLON** (Whiting '40)—EM 36 in. Carmel-tan with rosy transfusion. Large flower. ----- **\$0.50**
- CLA KALA** (J. Sass '43)—M 38 in. Brilliant yellow, almost orange in its depth and intensity. Medium large, well substanced, semi-flaring and ruffled, it has strong, nicely branched stem and is very weather resistant. Dykes Medal, 1943. ----- **\$1.00**
- OLD PARCHMENT** (Kleinsorge '39) — M 39 in. Strong textured flowers of ivory-white, with an over-layer of golden dust, incredibly gossamer. Large with domed standards and flaring falls. **\$0.50**
- PAINTED DESERT** (Milliken '43)—M 38 in. A blend of buff gold and rust red. Good form and finish. ----- **\$0.75**
- PEACH BLOW** (H. Sass '43)—M 34 in. A light yellow plicata with rosy-pink markings. Medium large and well branched. ----- **\$0.75**
- PINK CAMEO** (Fay '46)—M 38 in. A smoothly tailored and deep toned shell pink. A splendid iris and a very popular one. A.M., 1948. ----- **\$1.50**
- PINK SENSATION**—33 in. This is the pinkest in the pink line for us, a beautiful clear pink, flowers are large and slightly ruffled, set off by an orange beard. ----- **\$7.50**
- PINNACLE**—35 in. This is something new in Iris on the order of Wabash excepting the color, the falls are primrose yellow and the standards are pure white, this is a new combination for an Iris. ----- **\$4.00**
- PRAIRIE SUNSET** (H. Sass '39)—M 36 in. Indescribable blending of apricot pink and coppery gold. A gorgeous, glistening beauty that received a permanent rating of 93 in 1939 and the Dykes Medal in 1943, fsje. ----- **\$1.00**
- PURPLE GIANT** (Gage '33)—M 36 in. Large true purple, showy and vigorous. ----- **\$0.50**
- RAJAH BROOKE** (Norton)—M 32 in. Standards, topaz. Falls, pigeon-blood red with wide border of topaz. Gold beard. Large and well-branched. **\$0.75**
- RANGITIKI** (Stevens '41)—M 36 in. Among the finest of rich purple iris is this lustrous carmine-purple self, enhanced by a glowing gold beard. **\$0.75**
- RANGER** (Kleinsorge '43) — L 36 in. Large, long, dark but brilliant near crimson, with cone shaped standards and wide glossy falls. A fine late bloomer. ----- **\$1.50**
- RAVEN WING** (Milliken)—Dark as a Raven wing with much the same sheen, this lovely deep iris with beautifully domed standards and rippling loosely ruffled falls upon which rest the heavy dark bear, is indeed a most beautiful iris. 3 ft. ----- **\$5.00**
- RED DOUGLAS (THE)** (J. Sass '37)—ML 38 in. Huge, smooth, rosy, wine-red, deep and intense and solid to the haft. This purple-red is deservedly popular. Dykes Medal, 1941. ----- **\$0.75**
- ROSY WINGS** (Gage '36)—M 38 in. A soft blending of rosy red and copper, changing tone with the light. Very floriferous and appealing. Dykes Medal 1939. ----- **\$0.50**
- RUBIENT** (Whiting '42) — ML 38 in. Standards are a rich red-purple and this same color margins the blackish-red velvety falls. An Amigo done in red. ----- **\$0.75**
- RUSSET WINGS** (J. Wills '46)—M 38 in. Smoothly blended gold copper and apricot, bright and sparkling. Falls flaring and ruffled. Firm-substanced. Vigorous, hardy and well-branched. ----- **\$1.50**
- SABLE** (Cook '38)—M 38 in. Gorgeous black-violet with a lustrous, silky sheen and brilliance uncommon in so deep a shade. The queen of the blacks. **\$0.75**
- SHINING WATERS** (Essig '38)—M 42 in. Perfectly formed, large wax-like sky-blue. Tall. Well branched. One of the loveliest blues. Free bloomer. N----- **\$0.50**
- SIERRA BLUE** (Essig '32)—ML 42 in. Magnificent, smoothly-enameled medium blue self with long and broad flaring fall. Deeper in color than Shining Waters, and more hardy. Vigorous. Dykes Medalist of 1935. ----- **\$0.50**

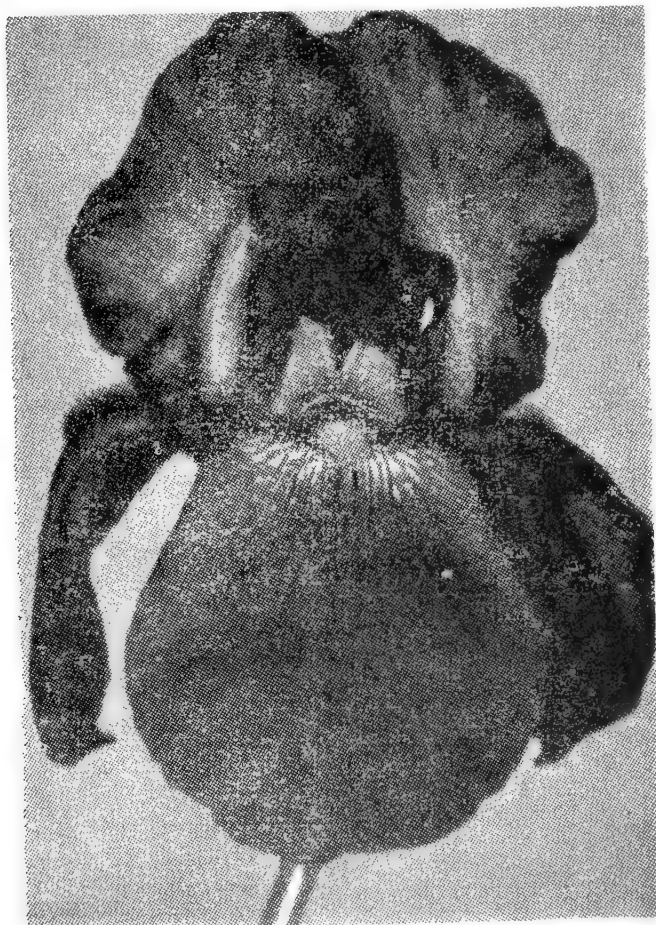
SIoux CITY SUE (Whiting - Snyder '47)—M 34 in. A glamorous beauty, named in honor of the lovely red-haired, blue-eyed son. It is a rich auburn-red with a central blaze of blue. The blooms are beautifully rounded, with captivating curvaceous lines. Good habits of growth and blooms. ----- \$0.75

SNOQUALMIE (Brehm '38)—M 36 in. Mellow creamy-yellow artistocrat worthy of the highest praise. Grand form and branching, heavy substance. Vigorous. ----- \$0.50

SNOW FLURRY (Rees '39)—EM 40 in. Beautifully ruffled blue-white. Large and well substanted. Highly branched. ----- \$1.00

SNOW VELVET (H. Sass '44)—M 33 in. Thick-petaled, velvety-textured white with smoothly-lacquered gold shafts. A beautiful white. ----- \$0.75

SOLID MAHOGANY (J. Sass '44)—M 36 in. Thrilling, brownish-red in a rich and glowing deep tone. Large, well substanted and well branched. Outstanding deep red. ----- \$1.00



SOLID MAHOGANY

SOUTHERN SNOW (Beck '47)—36 in. A broad petalled, early white. A good one. ----- \$0.75

SPANISH PEAKS (Loomis '47)—M 33 in. A superb new white that seems to have "everything." Giant size, purity of color, fine form, heavy substance and strong well branched stalks. A.M. 1950. ----- \$2.00

SPINDRIFT (Loomis '44)—Remarkable coral-pink, bright tangerine beard. \$1.00

SPUN GOLD (Glutzbeck '40)—ML 38 in. Gleaming, heavy textured, velvety, deep golden-yellow at very large size. Fine form and branching. Dykes Medal, 1944. ----- \$0.75

SUNSET BLAZE (Klein '48) E. M. 37 in. (From two sdgls.). A brilliant blend of flame red and coppery salmon. This has large flowers with a glistening finish that seems to really blaze in the sun. A.M. 1951. ----- \$2.50

SUNSET SERENADE (J. Sass '43)—ML 36 in. Lovely soft but glowing shade of golden tan, heavy-textured and extraordinary. Selected as the finest of Prairie Sunset seedlings. ----- \$0.75

S. O. 72 (Loomis Seedling)—A true pink self of very good substance. A smooth, clean, lustrous, light coral-pink. Fiery tangerine beard. Slightly flaring falls. Not named and introduced but available under its seedling number. ----- \$1.00

SYLVIA MURRAY (Norton '44)—M 38 in. A new light blue which has received much praise. Result of Great Lakes crossed with Shining Waters. ----- \$0.75

TEA ROSE (Whiting '44) — M 36 in. Glowing deep pink with coppery shadings. A strong clear color in a finely formed flower. Broad petaled and full. ----- \$0.75

THEODOLINDA (Ayers '42)—ML 38 in. Huge satiny-white plicata with button-hole stitching of bright blue. ----- \$0.50

THREE CHEERS (Cook 1945)—M 38 in. Large, tailored neglecta that is tops in this class. Rich, light blue standards and falls of deep ultra-marine. H. M., '46. ----- \$0.75

TIFFANJA (DeForest '42) — M 38 in. Firm standards of buff and this color also border the white falls which are brushed at the haft and speckled around the border with golden brown. ----- \$0.75

TIFFANY (Sass 38)—M 34 in. This yellow and maroon plicata is still very popular. The background is light yellow, the heavy plicata borders are deep red-brown or maroon. ----- \$0.50

TINDALAO (Milliken)—One of the largest bright yellow iris we have ever had in the seedling beds. The standards are ruffled and beautifully domed. The falls are wide and ruffled. A bright golden beard and gold venations at the haft give a flower of pure gold for your garden. 3 ft. ----- **\$5.00**

THREE OAKS (Whiting '43)—M 38 in. Larger than its sister, Tea Rose; this is deep mallow pink with a coppery flush and a blue haze on the falls. A.M. 1949. ----- **\$1.00**

TOURNAMENT QUEEN—36 in. This is a bright fushia toned flower firmly built and flaring which spreads to seven inches or more. Very fragrant and hardy. ----- **\$1.50**

TREASURE ISLAND (Kleinsorge '37)—M 36 in. A bright clear yellow with a lighter area in the center of each fall. A continuous popular yellow. ---- **\$0.50**

VATICAN PURPLE (Whiting '43)—ML 36 in. Rich, dark blue-purple with heavy textured satiny finish without haft markings. ----- **\$1.00**

VEISHA (Whiting '43)—M 30 in. Bright copper-rose blend with a blaze of blue in center of falls. Ideal for foreground planting. ----- **\$0.75**

VENETIAN RED (Milliken)—A smooth Venetian red self, enriched by a light brown overlay which gives an antique-red of unusual beauty. The flowers are medium sized and nicely ruffled. A lovely cinnamon beard gives the final finishing touch to this attractive flower. 3 ft. ----- **\$3.00**

VIOLET SYMPHONY (Smith '40)—EM 40 in. Gleaming violet of large size and perfect form. Very broad hafts and petals. A.M., 1943. ----- **\$0.75**

VISION OF MIRZA (DeForest '44)—M 40 in. A gigantic plicata of cream with all over markings of brown violet. Fine. ----- **\$0.75**

WABASH (Williamson '35)—M 38 in. Snowy white standards; purple falls with a white margin. This tall, clean cut amoena has no rival. Dykes Medal 1940. ----- **\$0.50**

WHITE CITY (Murrell '39)—EM 42 in. Immense blue-white with crisp ice-cold finish and silken sheen. Eng. Dykes Medal 1940. ----- **\$0.50**

WILD HONEY (Whiting '46)—EM 36 in. A golden tan self with a flush of rich gold in the throat. Large, well formed flowers. ----- **\$0.75**

WILLIAM A. SETCHELL (Brehm '38)—ML 38 in. This, we believe, is the world's largest good iris. Not only of startling size but, unlike most giants, is good all ways—form of bloom, branching, height, substance and vigor. Color, attractive two-toned violet. ----- **\$0.75**

WINTER CARNIVAL (Schreiner '41)—M 38 in. An outstanding flaring white. Large, graceful, waxy snow-white with gold throat. ----- **\$1.00**

Make up your own collections from the following group.

GROUP NUMBER ONE

All in this group are **50c** Iris, you may choose ten different varieties for **\$3.25**

Postpaid.

ANGELUS
AZURE SKIES
CALCUTTA
CALIFORNIA GOLD
CALIFORNIA PEACH
CHRISTABEL
COPPER FRILLS
CYNTHIA ANN PARKE
DAWN RAYS
E. B. WILLIAMSON

FLORA ZENOR
FRANK ADAMS
FREIDA MOHR
GLORIOLE
GOLDEN BOW
GOLDEN MAJESTY
HARVEST MOON
ICY BLUE
LAKE HURON
LOUVOIS

MELANIE
MISS CALIFORNIA
NIGHT FALL
OLD PARCHMENT
THEODOLINDO
SHINING WATERS
SIERRA BLUE
SNOW QUAIMIE
WABASH

GROUP NUMBER TWO

All in this group are 75c Iris, you may choose ten different for \$5.00 Postpaid.

ALLADINS WISH
BRASS BAND
GARDEN MAGIC
GOLDEN FLEECE
GREAT LAKES
JONQUIL

KATHERINE FAY
MULBERRY ROSE
PEACH BLOW
RANGITIEKE
PAINTED DESERT

SABLE
SIOUX CITY SUE
SNOW VELVET
SUNSET SERENADE
TIFFANJA

GROUP NUMBER THREE

All in this group are \$1.00 Iris, you may choose ten different for \$7.00 Postpaid.

ARAB CHIEF
BLUE RHYTHM
BLUE SHIMMER
BROWN THRASHER

CHANTILLY
ELMOHR
MINNIT COLOUIT
OLA KALA

PRAIRIE SUNSET
SNOW FLURRY
SOLID MAHOGANY
VATICAN PURPLE

DWARF BEARDED IRISES

35 cents each unless otherwise priced.
Shipment after July 1st

ALBA—Cream.

BRIDE—6 in. Free blooming creamy-white.

CYANEA—6 in. A rich crimson-purple.

FAIRY—A very pale blue.

FLORIDA—A good yellow.

MARCOCAIN—10 in. A deep, rich pansy-purple. A border iris.

NEGUS (Millet, '14)—Good dark violet-purple. Beard yellow. 8 inches.

PALTEC (Hill)—A very good medium blue. ----- \$0.50

PEWEE (Williamson) — A very lovely pure white. ----- \$0.40

ROSE MIST—10 in. A soft rosy-mauve. A border iris.

ROYAL—S. rich blue. F. reddish purple.

SCHNEEKUPPE—10 in. Snow white with green flush. White beard. A border iris.



SCHNEEKUPPE

SISKIN (Williamson)—A good light yellow. ----- \$0.50

TWO FOR TEA (Williamson)—Lovely soft lilac flowers. Also a fall bloomer. ----- \$1.00

FALL BLOOMING IRISES

\$0.35 each unless otherwise priced.
Shipment after July 1st.

AUT. ELF (Brown—Cream and lavender bicolor.

AUT. HAZE (Sass)—An attractive soft lavender of fine form and size.

AUT. SUNSET (Lapham)—A fine large flowered, blended pink. ----- \$2.00

DORAS HUTCHESON (Sass-McDade)—An early and persistent pansy violet, semi-dwarf, up to 20 inches.

ELEANOR ROOSEVELT (Sass-McDade)—A deep fluorite purple self.

FAR SOUTH—Neat pure yellow of good form. ----- \$0.50

GLAD SONG (Sass-Hill) — A yellow ground plicata. ----- \$0.50

***GOLDEN WEST**—Large yellow.

JEAN SIRET — A fine yellow dwarf.

KANSAS INGLESIDE (Hill) — Large warm toned red self, rather late as a fall bloomer, but worthy of a place in any garden for its spring bloom alone.

OCT. BLAZE (McDade) — Large red-purple.

***PESHAWAR**—This glowing rich brown purple is such a color gem and so perfect in garden performance that it deserves as high rank in this class as El-mohr in the tall class. ----- \$0.50

POLAR KING (Donahue) — A large, strong pure white. ----- \$0.50

SANGREAL (J. Sass)—A chrome and citron yellow.

***SUSA**—Velvety red-purple.

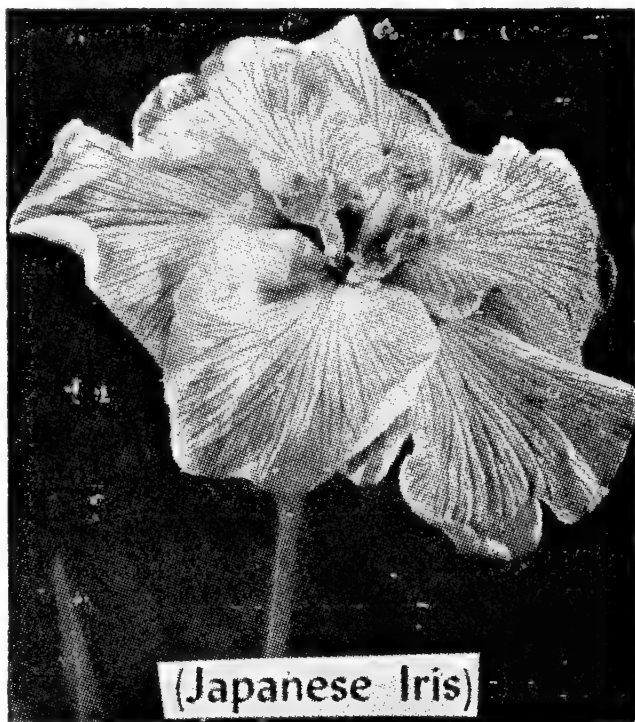
WHITE AUTUMN KING — Creamy white. Fall bloomer.

* Denotes intermediates.

JAPANESE (IRIS Kaempferi)

CULTURE—Like most azaleas and rhododendrons these iris will not tolerate lime in any form. For best results heavily enriched soil and abundant moisture are necessary. After blooming they require no more moisture than other perennials. An ideal location is along the banks of a stream or pond. They are successfully grown in most parts of the country and do especially well in the Atlantic and Pacific states and the southern border of the Great Lakes. Plant so that the crowns are about 2 inches below the ground surface. Do not expect typical flowers until the second year as they take more time to become established than bearded iris. In dry climates we cannot stress too strongly the importance of constant moisture during their growing season. In fact if your water supply is unlimited select a location where you can flood the plants often and you will be rewarded with larger flowers. Any well rotted manure is the best fertilizer. If your soil is alkaline, the addition of aluminum sulphate, peat moss or oak leaf mold will produce the correct soil condition. If the leaves turn yellow, lime very likely is present and LIME is FATAL to these iris. Best planted in full sun except in warm sections of the country where afternoon shade will prove beneficial. Keep away

from foundations, sidewalks, walls or any place where lime can reach. Shipment Sept. 1st.



BLUE BIRD—A very lovely large single of very bright blue with a touch of magenta that brings the color out, making it very outstanding. ----- Each \$0.75

CATHERINE PARRY—Large, ruffled and tufted medium blue blooms.

----- Each \$0.75

CHUSTI—A very large violet single with white veining at centr. Each \$0.65

COLUMBIA—Double. Blue with pure white veins, yellow center; a striking variety. ----- Each \$0.75

ELEANOR PARRY—Double claret-red, flamed white and blue. ---- Each \$0.75

FASCINATION — Double mauve-pink lightly veined white. ----- Each \$0.75

KAGARI-BI — A large, light red of unique shade. Lighter veining and lighter edges. ----- Each \$0.65

KUMCHI-GUMMI — A large, lovely, dark blue double with gold spots in center of flower. ----- Each \$1.00

LAFAVORITE — Large ruffled white single with opalescent lavender center. White effect. ----- Each \$0.70

MARGARET HENDRICKSON — Very large double to triple flowers of medium blue with a lovely tufted center. One of the very best. ----- Each \$1.00

MELPOMENE—Soft blue, double flowers of very large size and fine substance. A late bloomer, of medium height, with the blooms well above the foliage.

----- Each \$0.75

MT. HOOD—A large double, light blue with darker shades. Center of flower a very bright orange. ---- Each \$0.75

MRS. GEO. STUMPP—Immense white fall with tufted mauve-rose standards. A very fascinating single and one of our best sellers in the last two years. Must be seen to be appreciated.

----- Each \$0.75

NISHIKI-YAMA—Large, vinous mauve double, flushed and veined white. Center of petals banded with mauve. A rare iris. ----- Each \$0.75

PURPLE AND GOLD — Double, rich, violet-purple with white petaloids, tipped violet. Conspicuous golden throat with white rays. ----- Each \$0.75

REPSIME—The flowers are a beautiful azure-blue and are completely double. A variety of exceptional merit and one of the last to bloom. ----- Each \$1.00

ROSE ANNA—This exceptionally large very double flower is mauve and rosy-lavender, veined deep purple. Bright purple styles with large yellow spears. This is one you must have. -- Each \$1.00

SIGO-NO-URINUS—A very large double of striking purple with an outstanding tufted center. ----- Each \$1.00

SIBERIAN IRIS

CULTURE—SIBERIAN and SPURIA IRIS will grow and bloom in almost any soil that suits other perennial flowers. However, they are moisture lovers and will grow twice as high and produce twice as many flowers if kept constantly moist during their growing season. As they are most effective in large clumps they should be planted where they need not be disturbed. All are very hardy and should give no trouble anywhere.

Shipment Starts Sept. 1st

BLUE CHARM—30 in. Delightful light blue with large standards and round horizontal falls. ----- Each \$0.50

BLUE MOON (Scheffy) NEW—The most beautiful Siberian to date. Nothing so far can compete with this gorgeous creation. Very large, flowers with medium blue falls rounded and flat like a Japanese iris with lovely light blue standards for contrast. Stock very scarce. Hgt. 3½ ft. ----- Each \$3.00

BOB WHITE—28 in. A lovely, waxy, snow-white of good texture. Each \$0.50



CAESAR'S BROTHER ..

CAESAR'S BROTHER—48 in. One of the finest dark varieties, an intense black-purple. ----- Each \$0.60

- CRYSTAL CHARM** (Scheffy) New—A new arrival. Petals of purest sparkling white. Standards widely open. Edges delightfully crimped. Falls relaxed, displaying the orchid-like standards. A profuse bloomer with excellent branching. Ideal for corsages. -- **Each \$2.50**
- DRAGONFLY**—58 in. A fine strong growing extra tall flower of bluish-violet with a bronze throat. The tallest siberian. ----- **Each \$0.50**
- ERIC THE RED**—30 in. The newest of the reds. Extremely large flowers with broad flaring flowers of intense wine-red. The standards are large and the same glowing red. Many flowers on well branched stalks. Brilliant, distinct and lovely. ----- **Each \$3.00**
- GATINEAU**—36 in. Wonderful, clear medium blue with large flowers on tall sturdy stems. ----- **Each \$0.75**
- HELEN ASTOR**—30 in. The one and only bright rosy-red siberian. Large and breath-taking. Must be seen to be really appreciated. ----- **Each \$1.25**
- KINGFISHER BLUE**—42 in. A fine large, bright, uniform sky-blue. One of the best. ----- **Each \$0.50**
- LLEWELLYN**—42 in. A very lovely bright blue. ----- **Each \$0.75**
- MAY MORNING**—32 in. A fine large blue-purple of excellent form. **Each \$0.75**
- MATANE**—30 in. A very lovely, large, milk-white with attractive gold spear on each delightfully ruffled fall. ----- **Each \$0.75**
- MRS. ROWE**—32 in. A beautiful silvery-white, delicately flushed rose. A dainty flower that should be very attractive in flower arrangements or corsages. ----- **Each \$0.75**
- MY LOVE** (Scheffy)—46 in. A very new one by this hybridizer. A large, stately soft, medium blue of fine form and finish. A strong, well branched plant with long blooming period and much in demand for breeding due to the fact that this siberian is a twice bloomer. A must for those who want the latest and best. ----- **Each \$3.00**
- ROYAL HERALD** (Scheffy) New — Earliest of the large, tall, dark group. The richest plum-purple self with large drooping black falls like black velvet. ----- **Each \$4.00**
- SKEENA**—26 in. A late dwarf in dark blue-purple. ----- **Each \$0.50**
- SKYLARK**—40 in. An exquisite soft light blue with fall edged white. ----- **Each \$0.50**
- SNOWCREST** — 36 in. Snowy white blooms of excellent texture on tall stems. Perfectly formed blooms slightly ruffled. Unexcelled for cutting. ---- **Each \$0.60**
- SNOWY EGRET**—36 in. A large pure white that is generally regarded as one of the finest white siberians. **Each \$1.50**
- SNOW QUEEN**—28 in. A low white with an attractive yellow signal patch. ----- **Each \$0.50**
- SUMMER SKY**—32 in. An extraordinary siberian due to the reverse coloring. Very white flaring falls with standards of pale blue. ----- **Each \$0.50**
- TOWANDA RED FLARE** (Scheffy)—38 in. A large redish self, with wide segments and falls flaring widely. Styles slightly lighter. Haft, bright red-brown and gold over white. Between ASTOR and the darker ERIC in tone. Vigorous compact growth; flowers freely a little above the rather tall foliage. A very bright garden subject. ----- **Each \$2.00**
- TUNKHANNOCK** (Scheffy) — 36 in. The largest and most beautiful white siberian we have listed to date. Simply superb, with large, broad falls. Grand texture. ----- **Each \$2.50**
- TURQUOISE CUP** — 42 in. Exquisite clear turquoise blue flowers of finest poise and finish. A favorite with many. ----- **Each \$0.50**
- TYCOON**—A huge, violet-blue, broad petaled with an ideal satiny finish. Cannot be excelled for cut flower arrangements. Said to be the largest siberian grown to date. ----- **Each \$1.50**
- WHITE DOVE**—50 in. Tallest, most vigorous white, with an attractive golden throat. Fall flaring. ---- **Each \$0.50**
- ZERITA** (Scheffy) New — Like zest, mush, very much larger flowers. The center glow of the rose-red styles makes the clumps very outstanding. **Each \$3.50**
- ZEST**—34 in. A very lovely medium blue with outstanding reddish styles. ----- **Each \$0.60**

SPURIA IRIS

The Spurias, sometimes called "Butterfly Iris", resemble the Dutch irises which are extensively used by florists, but the flowers are large, and numerous blossoms, are borne on the three to four foot stalks, making a very showy display in the garden, and are superb as cut flowers, as they are not as fragile as the bearded iris and keep for days. The color range is wide, ranging from near white and creamy-yellow to a deep golden yellow, and from lovely old-gold shades down to a deep golden brown. There are lavender-blues and true blues and a mixed planting is indeed a very beautiful sight. The browns are quite new and unusually interesting.

Spurias require very little care, and can be left in a permanent location, so should be given room in which to grow. They thrive in full sun or partial shade, and do best if kept well watered in the early spring and throughout the blooming season.

Keep very moist until established. Perfectly hardy, they are very worthwhile additions to any garden. Spurias bloom at the same time as the late flowering bearded iris.

Spurias will be shipped only in the fall at the proper planting time. In planting them be sure to cover rhizomes three to four inches.

AZURE DAWN (Nies)—A blue-lavender Spuria of uniform coloring, except for a pale yellow patch on the falls. The smoothness of the coloring is particularly pleasing. 4½ ft. ----- \$1.00

BRONZSPUR (Nies)—A combination of sepia, old gold, and yellow, giving us a flower unusual and especially beautiful as a cut flower whose beauty is enhanced by artificial light. 6 ft. -- \$0.75

CHEROKEE CHIEF (Nies)—A velvety, deep brown iris with rich yellow signal patch on the flaring falls, which intensifies the rich brown color. Large flowers on tall stems. ----- Each \$7.50

DR. ANNIE BESANT—A very large and tall variety. Flowers are cream with a lovely gold splotch on falls. Used extensively in florist's arrangements. 60 in. ----- Each \$1.00

DUTCH DEFIANCE (Nies) A.M., 1949 — A very large, bold, hardy blue flower that has attracted much favorable attention. Splendid in form, finish and substance, its charm is enhanced by a yellow signal patch on the frilled falls. 3 ft. ----- Each \$3.00

GOLD NUGGET (Milliken) — A free flowering bright yellow which has become very popular. The flower stalks have three to four clusters of buds and flowers, each cluster containing two or three flowers. 4 ft. ----- Each \$1.90

MICHIGAN STATE (Nies) — A huge bronze flower of a beautiful round form. A loose veining over both standards and falls produce the light bronze effect. 40 inches. ----- Each \$1.00

MONNIERE—A soft yellow. The flowers have rather broad petals and are of smooth texture. Fine for cutting. 3 ft. ----- Each \$0.75

MT. WILSON (Milliken)—A blue Spuria which make an excellent variety to plant with some of the yellows, such as Monnieri or Gold Nugget. 3 ft. Ea. \$1.00

PASTORAL (Nies)—A corsage flower. The flaring falls are orange yellow, edged with pale lavender while the erect standards are yellow changing to lavender. The light lavender styles with their deep lavender crests add a finishing touch. 32 inches. ---- Each \$2.00

RUSSET FLAME (Nies) H.M., 1950—A vigorous, free flowering Spuria of rich russet coloring which makes it especially useful as a cut flower. The undercolor is deep yellow, the falls as being heavily bordered with dark brown while the standards are washed to a brownish yellow. Heavy substance and good keeping quality make it valuable to florists and home gardeners. Vigorous grower and increaser. 3½ ft. ----- Each \$1.00

SAUGATUCK (Nies) — A symphony of color. The standards are lavender shading to yellow at the base; the falls yellow, veined with bronze and broadly bordered with lavender. 4 ft. -- Ea. \$0.75

SUNNY DAY (Sass) — An excellent bright yellow which is very popular. 3 ft. ----- Each \$0.75

WADI ZEM ZEM (Milliken)—A beautiful large cream colored Spuria. The rounded spreading falls are two inches or more in width. The standards are erect and open. One hundred plants of this variety made the long journey by air to South Africa this past fall, they will be grown to supply the cut flower trade in that far off land. 4 ft. **Each \$3.50**

WHITE HERON (Milliken)—Whiter in appearance than any spuria to date. Some yellow on inner portion of flower. A pure white spuria is a goal not yet achieved. A very large flower on 4 ft. stems. ----- **Each \$4.00**

MISCELLANEOUS IRIS SPECIES

DICHOTOMA — Only member of the Pardanthopsis Section. The flowers are comparatively small but they bloom profusely on branched 3 foot stems for many weeks in August and September. Color varies from pale to deep lavender. Easy in any soil. ----- **Each \$0.50**

DORTHEA K. WILLIAMSON—One of the older hybrids from a cross between *fulva* and *foliosa*. Small deep velvety purple flowers of wonderful substance on 15 inch procumbent stems. Unexcelled for cutting. ----- **Each \$0.50**

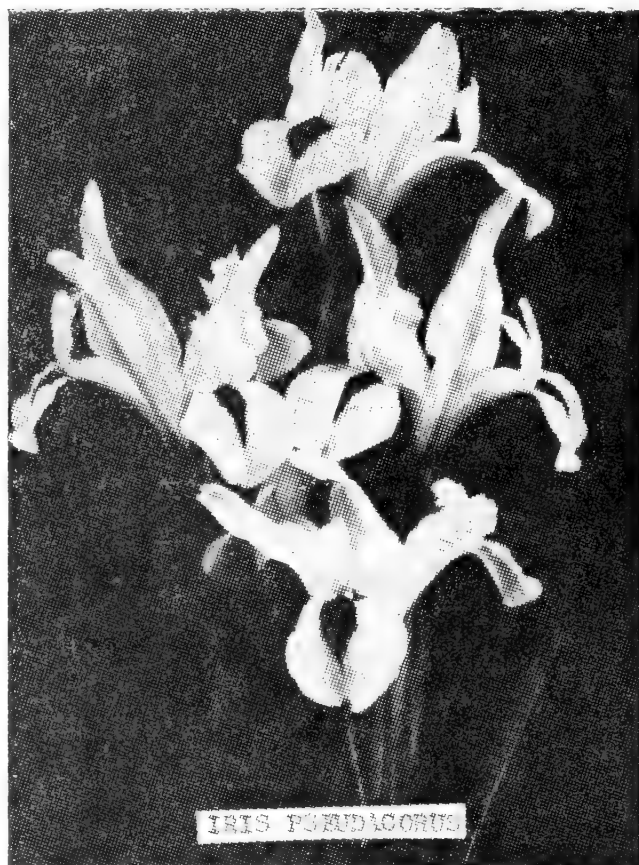
DOXA—Light olive grey with darker flush in the centers. Very large perfectly formed flowers of softest color. ----- **Each \$0.50**

MARY LOVE (Washington) — Strong growing lavender pink. ---- **Each \$1.00**

OCHROLEUCA GIGANTEA—A stately garden plant and a beautiful long lasting cut flower. In good rich moist soil it will grow 5 feet or more. The flowers have pure white standards while the falls are yellow with a quarter-inch margin of white. An A-1 plant for garden or cutting. ----- **Each \$0.50**

PALTEC—10 in. From the roof iris, pure pale blue. A border iris. **Each \$0.50**

PESHAWAR—This glowing rich brown purple is such a color gem and so perfect in garden performance that it deserves as high rank in this class as *Elmohr* in the tall class. ---- **Each \$0.50**



PSEUDACORUS—Bright yellow species with splendid foliage similar to Japanese varieties. Thrives in boggy locations. 36 inches. ----- **Each \$0.50**

RETICULATA — The type is brilliant dark purple with orange crests. All of the *reticulatas* are like the Dutch Iris in miniature. 4 inches. 3 for .50; 12 for \$1.75.

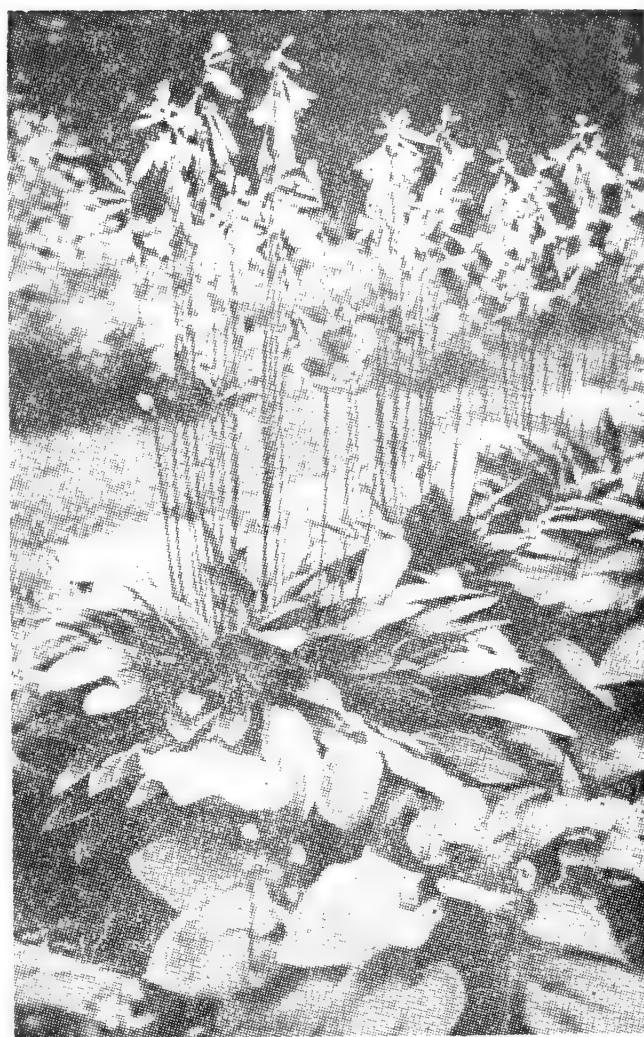
HOSTAS OR PLANTAIN LILIES

The Hostas are excellent for edging borders, mass, planting or in front of shrubbery. If you have a shady spot under trees that seems devoid of interest, then by all means try some of these interesting plants for they are at their best grown in such a location where their large sturdy leaves seem almost tropical in growth and very decorative. The racemes of bell like flowers of lilac, blue lavender, and white rise well above the foliage.

Shipments Early Spring or Early Fall

CAERULEA—The true variety has the bluest flowers of any of the Hostas. It is the next largest in size of flower to *H. Plantaginea* with very round puffed out bells of lavender blue distinctly penciled on the inner surface with deeper color. The leaves are glossy green of large size and graceful form. Use for border planting with pale yellow *Hemerocallis* in the background. July-August. 3 ft. ----- **Each \$0.75**

HOST DECORATA—The blunt plantain-lily has blunt dark green leaves with white edges. The leaves are about one foot high and the blade about five inches by three inches. In a couple of years a small plant makes a rosette of leaves two feet across. This rosette of leaves of green and white coloring forms an excellent end for a flower bed against a lawn as the outer leaves bend to the ground. The flowers, in the early part of August, are fat bells standing out at right angles on a two-foot stalk. The blossoms of purple have lines of white, so that the effect is not a solid color. There is a sturdy, substantial feeling to this plant. Formerly listed as Thomas Hogg. ----- **Each \$1.00**



LANCILOLIA ALBO-MARGINATA

ERROMENA — This Hosta has been identified through illustrations and description in "Bailey Hebarum" as Hosta Erromena. Listed and sold also under names Japonica and Lancifolia Undulata. It is a robust growing plant with dark green leaves with prominent curved veins either side of midrib, blade of leaf about 8 to 10 inches long, about 4 inches broad. Flowers, pale lilac bells on stalks 2½ feet tall, blooms in July. ----- **Each \$0.75**

FORTUNEI—A very fine outstanding species with good size glaucous leaves. Makes a fine specimen plant. Foliage not quite as large and more pointed than Seiboldiana. Lavender blue bell shaped flowers on stems 2 ft. or more in July. ----- **Each \$0.75**

SUBCORDATA GRANDIFLORA —Also listed as Plantaginea. Large yellowish green leaves on long stems. Largest blooms of all Hosta. Pure white, lily-like in form. In bloom August-September. 24 inches. ----- **Each \$0.75**

LANCIFOLIA FORTIS — Lance leaf plantain lily. Long lance like foliage, dark green in color, produced in abundance. Flowers are violet. Bloom September and October on stems two feet tall (very floriferous and especially welcome as it is in bloom over a long period in the fall when flowers are scarce). ----- **Each \$0.50**



UNDULATA VARIEGATA—This plant has more white in foliage and leaves are quite wavy. Lovely lavender blossoms in July. ----- **Each \$0.75**

LANCILOLIA ALBO-MARGINATA — The narrow leaved plantain lily is very rapid grower. The slim light green leaves have a white line along the edges of the narrow blades. The leaves are about eight to twelve inches long. Lavender, bell shaped flowers, with white lines. Two foot stalks blooming in the middle of Aug. Mature plans are bushy and bloom freely. ----- **Each \$0.60**

HARDY PERENNIALS

The Perennials listed in this section must be shipped in early spring or early fall. After growth has started they do not ship well so get your order in early.

ANTHEMIS

TINCTORIA (Kelway's Variety)—Handsome finely cut foliage, and daisy-like yellow flowers produced all summer. Succeeds well in the poorest soil, excellent for cut flowers. ---- **Each \$0.40**

ARTEMISIA

SILVER MOUND (Schmidtiana Nana)—A handsome, compact, mound-like plant about 4 inches high and 12 inches in diameter. Foliage fernlike and of the lightest and brightest silvery gray. It makes a very pleasing effect in the rock garden or as an accent plant but it is most distinctive when used for edging beds or walks. Prefers a warm, sunny, dry location. Hardy anywhere. -- **Each \$0.75**

ASTERS (Hardy)

BEECHWOOD CHALLENGER—This is in our opinion the closest to red we have been able to come so far in Hardy Asters. It is free-flowering, about 24 inches high, and brilliant crimson-red color. The flowers are produced in immense quantities throughout September and October. ----- **Each \$0.50**

HARRINGTON'S PINK ADORABLE—Produces fine silvery rose flowers in clusters, continuously from early September until cut down by frost. **Ea. \$0.50**

PLENTY—2½ ft. rounded bushes covered with large semi-double flowers of soft blue from early Sept. on. **Each \$0.60**

VIOLETTA—The loveliest, deepest, richest blue of all Fall Asters. 2 ft. bushes, completely covered with bloom from Sept. till frost. ----- **Each \$0.60**

ASTIBLES

Astibles are ideal, colorful perennials for shaded locations in the garden. They also do well in the sun but prefer rather rich, moisture retaining soil watering is essential during dry weath. Plants bloom freely in June and July and the foliage remains attractive all summer.

FANAL—Lovely plants with bronzy-green foliage and feathery plumes of glowing dark garnet-red. ---- **Each \$0.75**

GLORIA—Feathery plumes of glowing deep toned pink. ----- **Each \$0.75**

PEACH BLOSSOM—Feathery plumes of delicate peach-toned pink. -- **Each \$0.75**

BLEEDING HEART (Old Fashioned)—A favorite in Grandmother's garden half a century ago, it is equally popular today. Grows 2 feet tall. Thrives in partial shade, but will grow in full sun. Attractive foliage. Graceful heartshaped pink flowers in April-May. The plant becomes larger, more beautiful, each passing year. ----- **Each \$0.75**

BLEEDING HEART, FERN LEAF (Eximia)—Lovely pink flowers are produced continuously from late spring right through summer into fall. Fern-like foliage is very attractive. Grows a foot tall in sun or shade. Hardy, easy to grow. Fine border plant. -- **Each \$0.50**

BLEEDING HEART (Bountiful) — This is a very new DICENTRA HYBRID, remarkable in a robust way. Resembles DICENTRA EXIMIA but is vastly superior. An established clump attains a width of 18 inches, 10 inches tall with as many as 30 to 40 very sturdy bloom stems appearing in May and lasting well into Aug. The foliage is a healthy dark blue-green. Reflowers in Autumn. Prefers sun to shade in a well drained location and is perfectly hardy. -- **Each. \$1.25**

DOUBLE SHASTA DAISY

Shipment—May or September

AGLAYA—A magnificent, large, fluffy, fully double Shasta Daisy whose glistening narrow white petals produce a fluffy, pompadour-like flower. After the main crop of blooms, this hardiest of all double Shatas continues to bring forth flowers throughout the entire season. Long lasting flowers are superb for indoor arrangements. -- **Each \$0.75**

WIRRAL PRIDE—An English introduction of very compact growth. The high yellow center is a contrast to the glistening white petals. 2½ to 3 feet tall, flowers in June. It has withstood weather of 14° below. ----- **Each \$0.75**

ECHINOPS - Globe Thistle

TAPLOW BLUE—This variety is particularly desirable. The flower heads are larger and are intense metallic blue. It is very free flowering and does beautifully in difficult, dry soils. A clump of Taplow Blue makes a fine contrast growing alongside of white Phlox. Plant in full sun. Hardy anywhere. **Each \$0.60**

HEUCHERA CORAL BELLS

BREZOIDES—Profuse bloomer. Pink. 1½-2 ft. All summer. ---- **Each \$0.50**

LIATRIS (Gayfeather)

This fine spire-like perennial blooms in midsummer. It is showy in the garden and excellent for cutting. Grows easily in common garden soil in full sun or part shade.

PUNCTATA LONGIFOLIA — Dense spikes of purple florets. ---- **Each \$0.40**

PYCONSTCHYA—4 ft. The tall spikes of rich purple are outstanding in the summer garden. July-Aug. **Each \$0.35**

SCARIOSA (Alba)—Interrupted florets of white on tall spikes. ----- **Each \$0.50**

SCARIOSA (August Glory)—An Aug. blooming Scariosa. ----- **Each \$0.40**

SCARIOSA (Giant spikes of interrupted florets of rosy purple. ---- **Each \$0.40**

MERTENSIA - Virginia Cowslip; Blue Bells—All are medium growth, and well suited for shady or partially shady borders. Mostly blue or white-flowered. The only one we really recommend is *Mertensia virginica*.

CULTURE—All will succeed in ordinary soil. A shady or partially shady position is desirable; lovely planted in open woddlands together with daffodils. Plant in autumn or very early spring, 6 to 8 inches apart.

VIRGINICA—An early spring-flowering plant, growing about 1 to 1½ feet high with blue flowers fading to pink; one of the most interesting of our native spring flowers. ----- **Each \$0.50**

LIRIOPE

Perfect Groundcover

One of the most pleasing, satisfactory evergreen groundcover and rock garden plants, for sun or shade, is the Creeping Liriope, or Lilyturf, *L. spicata*. It spreads rapidly, has grass-like foliage, and, with its spikes of little blue flowers, is about 10 in. high. The foliage is a dense spread of green. The flowers appear in July and August, but the plant looks well the year round. It grows where grass won't do well, and meets a great need beneath trees. -- **Each \$0.50**

NEW ENGLISH PHLOX

SIR JOHN FALSTAF (Another English Triumph)—A giant among Phlox and unquestionably the most outstanding variety we have seen. It is so far in advance of all others that we predict it will retain the lead for a very long time to come. Color is a rich luminous salmon-pink, one of the loveliest colors in the floral pageant of summer. Individual "pips" are larger than a five-shilling piece, about 1⅞ inches in diameter. The flower truss is truly massive—there is no other Phlox comparable in size. Sir John Falstaff has a first-class habit and a constitution as befits the name—robust, vigorous, with sturdy stems and bold substantial foliage. And as to growth—it is one of the most accommodations we know. Height 24 to 36 inches depending on soil conditions.

----- **Each \$0.75**

WHITE ADMIRAL—Beautiful big heads of bloom like great mounds of snow. Here is a brand-new white Phlox guaranteed to bring more beauty to your garden. It produces enormous pure white heads and the continually breaking side branches give an excellent late bloom. Reaches a height of 2 to 2½ ft. and blooms profusely in July and August. It is delightfully fragrant. -- **Each \$0.55**

PHYSOSTEGIA

FALSE DRAGONHEAD

\$0.50 each or all three for \$1.25

GRANDIFLORA ROSY SPIRE—Grows from 18-24 inches with large heads of bright violet mauve flowers. Very desirable for cutting.

GRANDIFLORA VIVID, TALL TYPE—Similar in color to the well-known Grandiflora Vivid, except that this variety grows to height of 30 inches. The flower spikes are also larger and the color a little more striking. It continues to bloom throughout the entire months of July and August.

SUMMER SNOW—In all its characteristics, it resembles the medium tall Rosy Spire. Flowers are glistening pure white and admirably suited to cutting.

PLATYCODON (Balloon-Flower)

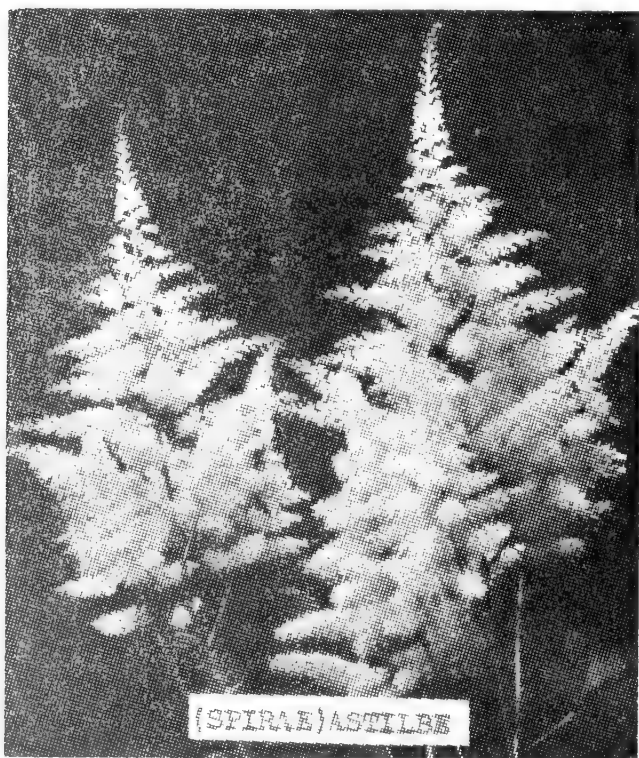
Dependable, hardy plants giving a wealth of bloom for a long time during the summer, when color is most needed in the garden. They will do fairly well in part shade.

3 Outstanding New Balloon-Flowers

NEW SHELL-PINK—18 in. Distinctive pale pink flowers. Blooms freely all summer.

DOUBLE WHITE — Beautiful double blooms on 18 to 24-inch plants. Excellent for cut flowers and for garden decoration.

DOUBLE BLUE—A good companion for Double White.



SPIRAEA-Goat's Beard; Meadow Sweet—Very handsome herbaceous perennials. The species named below have handsomely divided leaves and flowers borne in graceful, feathery plumes.

Culture.—The Spiraeas require a deep, rich moist soil. Plenty of leaf mold and well-decayed manure must be incorporated with it before planting. They will

thrive in shady, moist borders, or they may be grown by the waterside. **FILIPENDULA flore-pleno**, being small, should be grown in groups of three or six plants. Plant in autumn or early spring, 12 inches apart.

FILIPENDULA — Lovely single white flowers on 12 inch stems. Beautiful fern like foliage that stays green the year around. Blooms in June and July. ----- **Each \$0.50**

FILIPENDULA FLOE-PLENO—Double white flowers on 12-inch stems; lovely fern-like foliage. A very neat plant and excellent for edging beds or walks. Flowers are fine for cutting, lasting well in water. ----- **Each \$0.70**

TRITOMA

RED HOT POKER

CORAL SEA—A superb shade of pastel coral-red, overlaid deep rose. June and July. ----- **Each \$1.00**

GOLDMINE — Its bold burnished and golden yellow flowers are profusely produced from July until stopped by frost. Everyone who sees a clump of Goldmine in bloom enthuses about its impressive beauty. It is a really fine plant, and should be in every garden where its stateliness and fine color will make it one of the most outstanding subjects. Grows about three feet high with often 10 or more spikes at one time. **Each \$0.75**

PRIMROSE BEAUTY — The beautiful spotless primrose-yellow spikes produced by this plant are unique for their grace as well as their delightful color. They are faultlessly shaped and slightly arched, creating a charming effect. Primrose Beauty blooms in early summer, June and July. ----- **Each \$0.75**

VANILLA—A free flowering, small tritoma of pale, clear yellow. Best showing in June. ----- **Each \$0.75**

SPRINGTIME—A two toned flower of real beauty. Upper half, rich coral-red, lower half, ivory yellow. Early July. ----- **Each \$0.80**

VERONICA — Speedwell

LONGIFOLIA SUBSESSILIS—2 ft. July to September. One of the handsomest blue flowering plants. Perfectly hardy and increases in strength and beauty each year. Spikes completely studded with beautiful blue flowers; fine for cutting and one of the best plants for the hardy border. ----- **Each \$0.50**

TERMS OF SALE

(SUBSTITUTIONS)

All orders filled in rotation as received. In case of stock depletion we will fill with like or better stock of same description, correctly labeled, unless, order is marked (NO SUBSTITUTION).

No. C. O. D. orders will be accepted. Cash with orders please and please do not send stamps. We advise the use of money orders or checks as cash in the mails is always hazardous. We pay postage on all orders of \$3.00 or more, otherwise add 35 cents to help defray cost of packing and postage. Air Mail orders will cost the buyer the difference between regular and air service. Consult chart for Air rates. We will continue to insure all Mum shipments and all orders received in bad order should be registered with the local postmaster for our protection. Complaints on bad orders must be received by us within TEN days. Kansas residents are required by law to send 2% sales tax.

SPECIAL DELIVERY SERVICE. To customers in urban communities where this service is available, we stress usage of this, as it would greatly expedite delivery. The rate is 35c up to 2 lbs., 45c to 10 lbs., and 60c to 70 lbs., which must be added to total order. This also includes special handling.

OUR GUARANTEE—We guarantee all stock to be state inspected and free from insects and disease and to be true to name. We also guarantee all stock to be received by you in good condition and true to name. If found otherwise, we will refund the amount paid for said stock on proof of error on our part. We give no warranty expressed or implied, and can be in no way responsible for the crop.

Revised Air Parcel Post Rates—Nov. 1st, 1950. Compute mum plants at rate of 1 to 12 per pound.

Wght.	Zones	Zone	Zone	Zone	Zone	Zone	Zone
	1-2-3	4	5	6	7	8	
1 lb.	.60	.60	.70	.75	.75	.80	
2	1.03	1.15	1.25	1.39	1.47	1.60	
3	1.56	1.65	1.82	2.03	2.19	2.40	
4	2.04	2.15	2.38	2.67	2.91	3.20	
5	2.52	2.65	2.94	3.31	3.63	4.00	
6	3.00	3.15	3.50	3.95	4.35	4.80	

Visitors always welcome. Drive ½ mile west of Hwy. 69 on 78th St.

Please do not credit this coupon on collections as they are already very heavily discounted. Remember—Ye Auld Acquaintances are not forgot as we will fill orders generously.

New Customer Coupon

If you are a new customer, be sure to clip this coupon and send it to us with your order. Coupon good for \$1.00 in stock with an order of three dollars or more.

SHOEMAKER'S GARDEN
Overland Park, Kansas

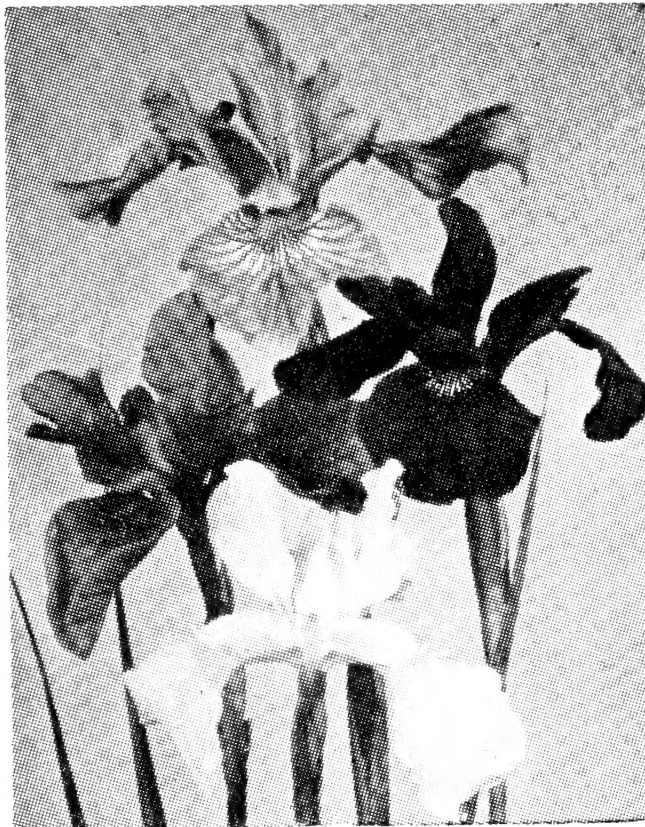
"DELUXE COLLECTION"

OF SIBERIAN IRIS

**TYCOON
CRYSTAL CHARM
GATINEAU**

**MRS. ROWE
ERIC THE RED**

Catalogue Value \$9.50. All Five for
\$7.00 Postpaid.



"THE GARDEN JEWELS"

COLLECTION OF SIBERIAN IRIS

**LLEWELLYN
MORNING MAGIC
CEASAR'S BROTHER**

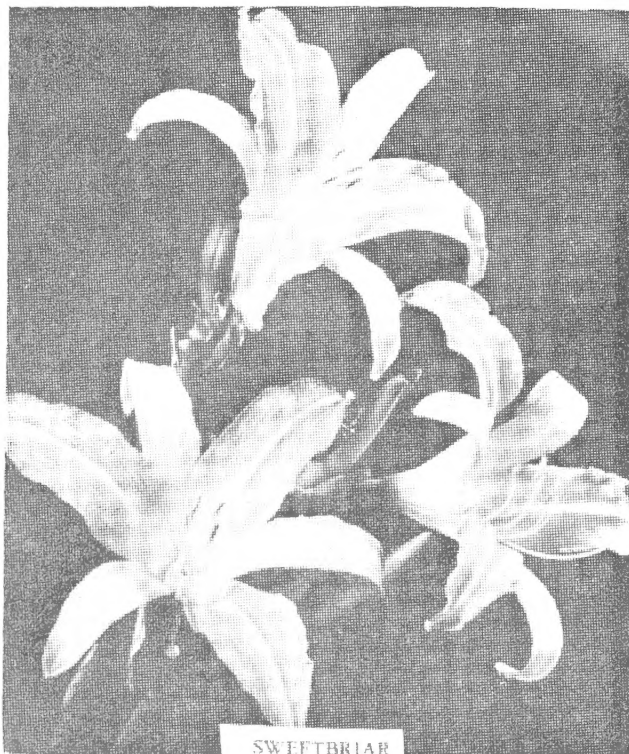
**SNOW CREST
TOWANDA RED FLARE**

Catalogue Value \$4.85. All Five
\$3.50 Postpaid.

"CHARMING PINK" DAYLILY COLLECTION

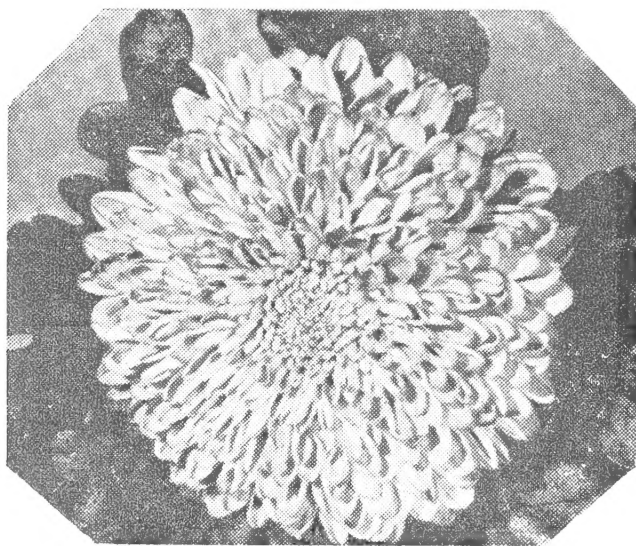
DOLLY VARDEN
HAZEL SAWYER
PINK CHARM
SWEET BRIAR

Above four plants, Catalogue Value \$4.75
Prepaid for \$3.75



POPULAR GARDENING COLLECTION

The following Collection of English Mums, are all 1953 Imports. Catalogue Value, \$10.00. All Ten \$5.75 Postpaid.



FRED YULE

CONNIE UNA
FRED YULE
INCURVED LOVELACE
MARY ROSE
MAYFORD TRIUMPH
PEACH BLOSSOM
REGAL
SALMON DAYDREAM
SANCTITY
SUNBEAM